

SRP-02R

2-PORT REMOTE
POWER FAMILY



*Securely monitor and control your power outlets
from anywhere in the world!*

The SRP-02R series power distribution unit (PDU) allows you to:

- Reboot your computer or other devices remotely via the internet
- Control power usage by creating schedules to save energy and money
- Monitor power usage to determine how much electricity has been used



Made in the USA

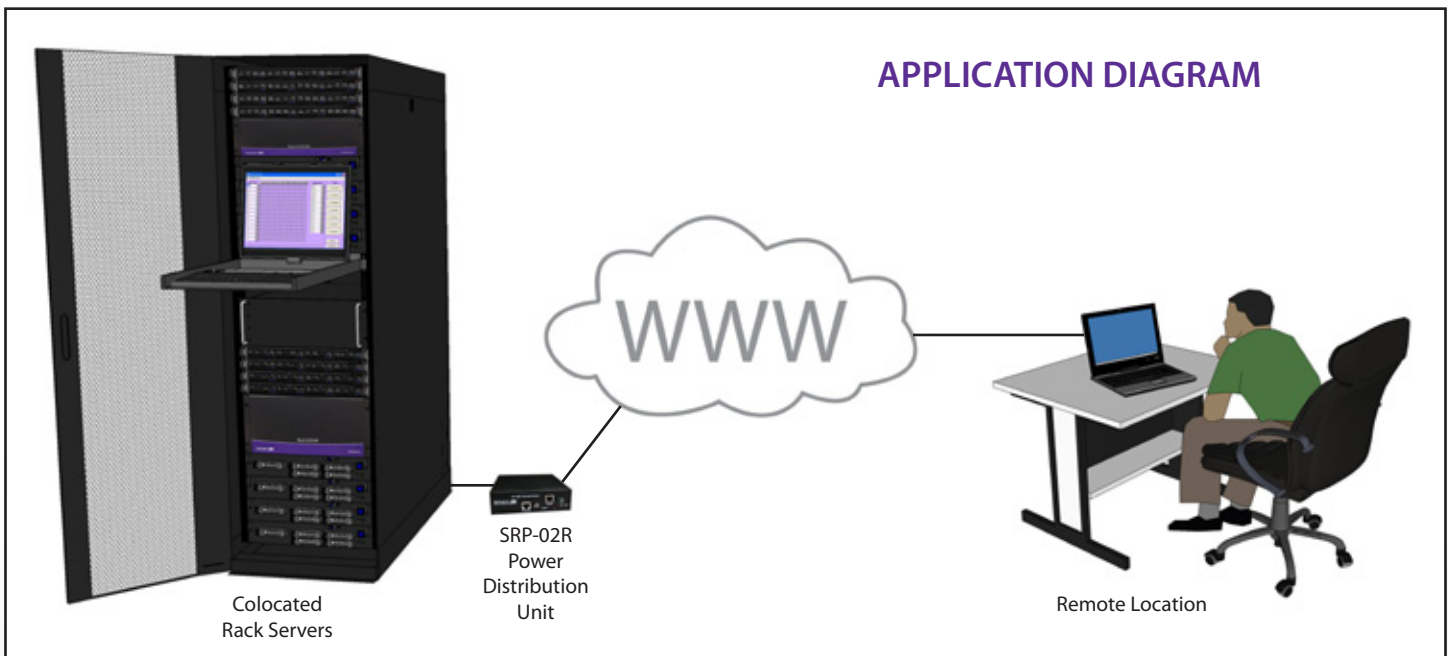
Smart-AVI
SMART AUDIO VIDEO INNOVATION

www.smartavi.com

FEATURES

- Securely monitor, control and reboot devices from anywhere in the world
- Accessible via RS232, IE, Telnet, Email and SNMP
- Supports AUTO-MDIX via one RS232 service port & one 10M/100M-T RJ45 ethernet port
- Supports secure access ethernet connection, encrypted SMTP transfer and https security
- Configurable with DHCP or static IP
- Supports per outlet event timers and clock
- Supports simple internet firewall for added security
- Autonomous ICMP AutoPing for each power outlet
- Integrated SNMP agent and trap notification message capability
- POP3/SMTP for sending and receiving control commands or data
- Supports per port access management up to 8 users
- Local and remote temperature and current sensing
- Dial-up modem support via local serial port
- Handles large current equipment up to 15-40A 100-240V

APPLICATIONS

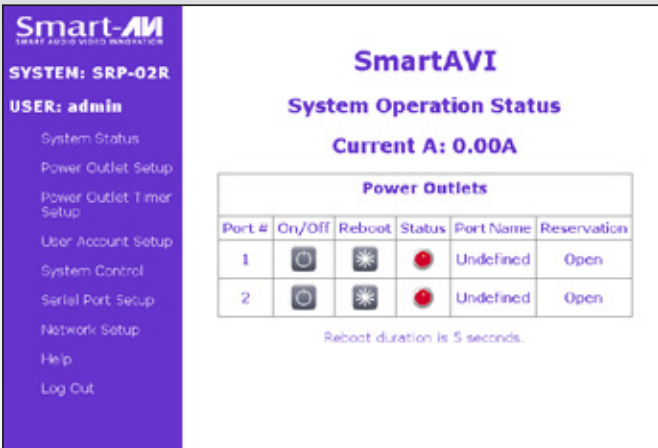


- Control the power to mission critical devices such as a colocation servers, ATMs or cash registers.
- Monitor how much energy is used by devices
- Reboot servers when they become unresponsive
- Schedule times to power off unused devices to save energy and money

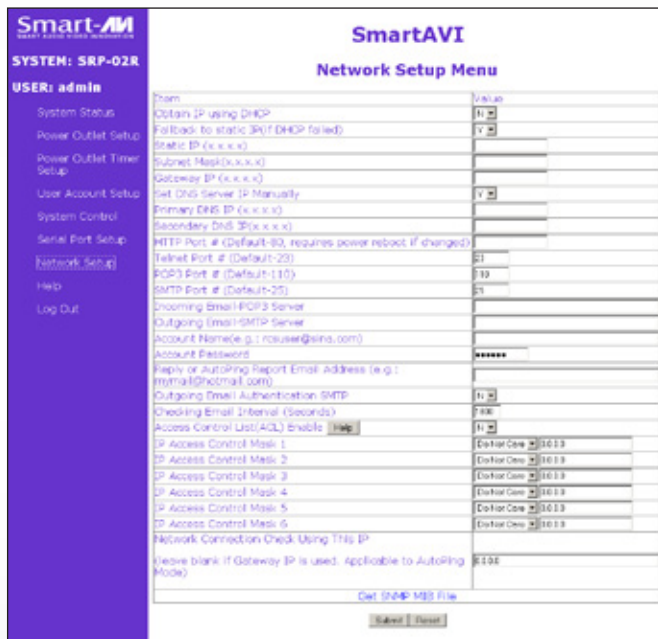


WEB INTERFACE

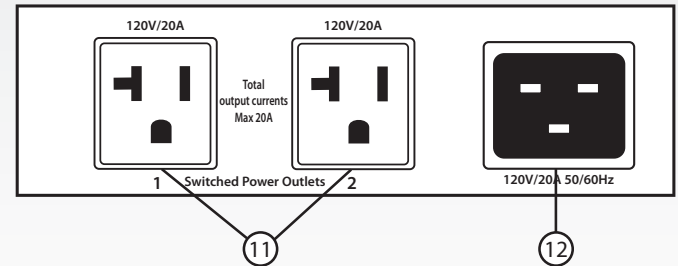
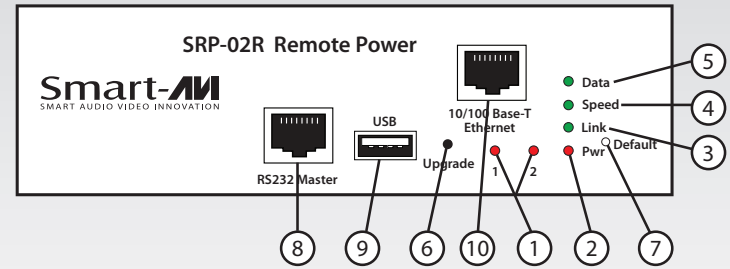
SPECIFICATIONS



The SRP-02R has a comprehensive and easy-to-use web interface for monitoring and controlling the functions of the unit. Simply log on to the device through a web browser and setup the many functions of the SRP-02R. Turn outlets on and off, reboot outlets, monitor power usage and more.



The SRP-02R has a detailed network setup menu that gives you total control over the access to the device. Access is available through a number of methods, including TCP/IP, Telnet, POP3, SMTP and more.



NOTE: 220V and International sockets available on request for the following regions:

USA, Canada, Europe, UK, Australia

1. Power Outlet status LED: Visual indication of user power outlet On/Off status.
2. System power On/Off status LED: Indication of system power On/Off status.
3. Ethernet Link status LED: When illuminated, the Ethernet port and LAN connection are established.
4. Ethernet speed status LED: Ethernet port have 100M status.
5. Ethernet Active data status LED: When there is data traffic on the LAN, the LED is illuminated.
6. Factory Upgrade switch: Allow the user to upgrade the system. The switch is located behind the small front panel opening.
7. Factory Default Reset switch: Allow a user to reset the system to factory default settings. The switch is located behind the small front panel opening.
8. Local Master Port (female, or RJ-45 socket): This is also a service port for the user to configure and change the operation setting of system.
9. USB Port for software upgrading.
10. Ethernet Port (RJ45, 10/100 Base-T): 10/100 Based-T Ethernet port for connection to LAN.
11. Switched Outlets: AC Outlets that can be switched On, Off or rebooted in response.
12. Power Inlet: An NEMA5-15P/IEC320-C14 AC inlet which supplies power.

SPECIFICATIONS

Enter Plug	1
Supply Socket	NEMA5-15P NEMA5-20P CEE7/7 BS1363 IEC60309 NEMA L6-20P NEMA L6-30P
Equipment End	IEC60320-C20
Outlets	(2)NEMA5-20R
Input Current	20 Amp
Input Voltage	100-240 VAC
Chassis Dimensions	6 in W x 6.7 in D x 1.75 in Hw
Console port	Baud rate:115200; 8 data bits ; No parity;1 stop bit, no hardware handshaking
Ethernet	10/100 Base-T, support AUTO-MDIX
Network Protocol	ICMP, IP, TCP/UDP, DHCP, Telnet, DNS, POP3/SMTP, SNMP, HTTP, HTTPS and SSL
Display	6LEDs
Operating Temp.	32F - 122F (0C - 50C)
Storage Temp.	-20F - 140F (-29C - 60C)
Humidity	10-90% RH

ORDERING INFORMATION

Part No.	Description
SRP-02US	2-Port Smart Remote Power Unit. Includes: [SRP-02U] (United States Socket)
SRP-02ES	2-Port Smart Remote Power Unit. Includes: [SRP-02E] (European Socket)
SRP-02BS	2-Port Smart Remote Power Unit. Includes: [SRP-02B] (United Kingdom Socket)

Many leading companies have recognized and embraced the innovation of SmartAVI's technologies and have successfully incorporated them into their organizations. Clients of SmartAVI include:



SmartAVI, Inc. / Twitter: smartavi - 11651 Vanowen St. North Hollywood, CA 91605
 Tel: (818) 503-6200 Fax: (818) 503-6208 - <http://www.SmartAVI.com>

Smart-*AVI*
 SMART AUDIO VIDEO INNOVATION



Made in the USA

www.smartavi.com