

SignWare2

The Complete,
Affordable and Expandable
Digital Signage Solution

Now with Component Video

HD ready
720p 1080i



- Delivers crisp HDTV 720p/1080i resolution
- Simple to install and easy to use
- Upgradeable with Built-in Flash Memory SD Card Slot
- Supports Component Video + Audio
- Control your displays with RS-232 commands
- FREE server software included with NO recurring fees
- Control multiple players remotely from anywhere in the world through the internet
- Create eye-catching multimedia with pre-loaded customizable templates
- Define schedules to display your message in the right place at the right time
- Add local or live RSS tickers for news and events
- Includes remote control
- Expand your signage network up to 1,000 players!



MADE IN THE
U.S.A.

Get SignWare and Get Noticed

Everything you need to create your digital signage network



Made in the USA

Smart-AVI
SMART AUDIO VIDEO INNOVATION

www.smartavi.com

GET NOTICED

Accessing the power of a Digital Signage Network has never been easier

SignWare2 offers greater video support with component video output along with stereo audio. SignWare2 also offers upgrade support with a built-in SD Card Flash Memory Slot. SignWare2 is a comprehensive digital signage package that is very affordable and fully expandable. It is manageable from any location on the planet, whether you have one or one thousand signage installations. SignWare2 offers crisp high-definition 720p/1080i HDTV video combined with stereo audio in a conveniently small package. The unit comes bundled with a simple yet powerful software package with no recurring fees.

The SignWare2 player comes pre-loaded with signage templates. Each template has customizable zones, schedules and content. Zones allow multiple types of content to be displayed on the screen at the same time. Schedules can be customized to play content based on a delivery schedule, getting the message out at the right time. Finally, the software can log what has been played on each signage player, giving the signage administrator the tools to keep track of the network.

SUPPORTED FORMATS



HD Video



MPEG/AVI



JPEG/GIF



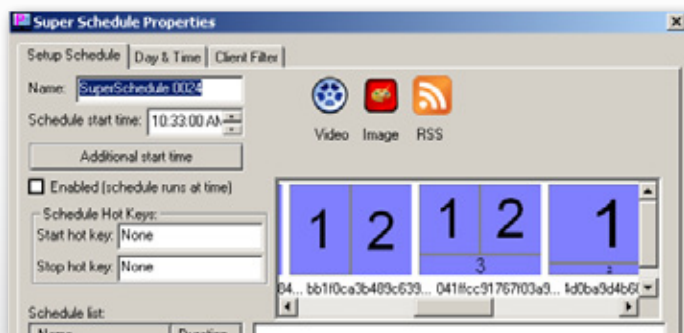
RSS News Feeds



ANIMATED GIF

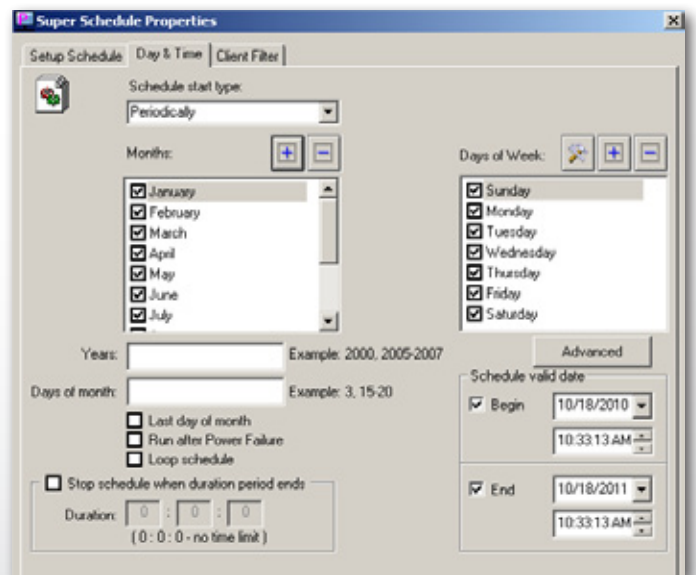
Zones

- Zones are areas on the screen where different content can be displayed.
- A screen may be split into several customizable zones.
- Each zone can contain different a mix of several different media types including video, images, RSS feeds and more.
- Signware includes several pre-loaded templates with multiple customizable zones.



Schedules

- SignWare2's powerful scheduling software makes it easy to create timely events.
- Schedules can be changed from anywhere in the world via the SignageManager software.



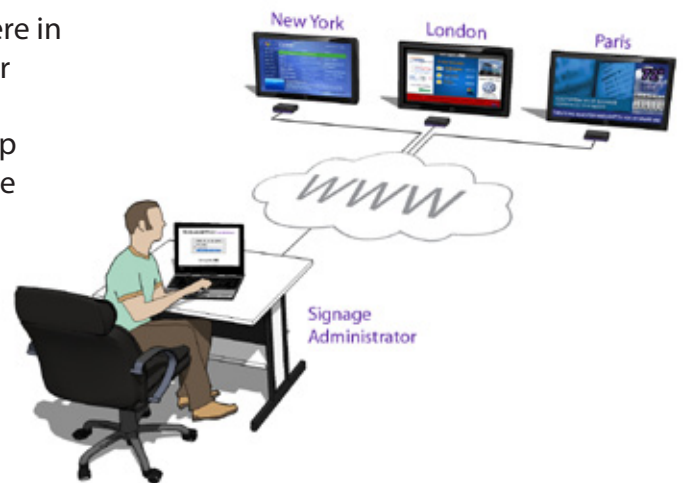
Take control of your digital signage network



Multiple client signage players can be managed with **SignWare Manager**, the included FREE software management tool with NO recurring fees. Each client can be programmed individually. One PC – we'll call it the "server" – can operate as many digital signage clients as you need at once, be it one or more than a thousand.

Deliver your content to thousands of locations around the world

Using the power of the Internet to deliver content anywhere in the world, SignWare2 can be managed via local network or the Internet. Individual signage displays, or clients, can be programmed and initiated from your own PC, be it a laptop or desktop computer in your home or office. Clients can be configured to retrieve live information such as RSS feeds, or to operate in stand-alone mode.



Keep track of all your Digital Signage delivery

- See what is currently being played across the network.
- Create reports for a history of what has been played.
- Export reports in plain text or Microsoft Excel format.



Save Energy with SignWare2's RS232 Control

SignWare2 has built-in RS232 control that allows you to control your signage hardware. For example, if a signage display is only used during the day, SignWare2 can schedule your display to turn off at night to save power. Statistics show that energy costs can be cut in half simply by turning off a display while not in use.

SPECIFICATIONS

Remote Control Included

Accessing the functions of the SignWare2 player is easy with the included remote control. Schedule content, select templates, control playback of media, adjust the volume and much more.

Use the remote control when you need to make a quick adjustment to the signage display. Access the network connection settings through the on-screen display (OSD).

Customizing your digital signage installation is easy with the SignWare2 remote control in the palm of your hand!



SignWare2 Front



SignWare2 Rear

SUPPORTED FORMATS	
Image	JPG, GIF, Animated GIF
Video	AVI, WMV9, MPEG-2 PS, MPEG-1, MPEG-2 MP@ML, MPEG-4.2 ASP, MPEG-4.10/H.264, MP@L3.0,
Audio	MPEG-1 Layer I, II, MPEG-4 AAC
VIDEO	
Resolution	Up to D1 (720x576 PAL, 720x480 NTSC, up to 1080i via Component), 480i, 720p, 1080i via HDMI
Connector	Component (RCA), HDMI
AUDIO	
Connector	3.5 mm Stereo and Integrated HDMI
OTHER INTERFACES	
USB	Single 2.0
Infrared	IR Receiver
Power	5VDC 3A
Network	RJ-45 10/100
Storage	Upgradeable Flash Memory SD Cardslot
Operating System	Linux
Processor	NXP-ARM
Dimensions	7.5" L x 1.25" H x 6.75" D
ENVIRONMENTAL	
* Operating temperature: 35° F to 96° F	
* Storage temperature: -20° F to 140° F	
WARRANTY	
1 Year	

ORDERING INFORMATION	
Part No.	Description
AP-SNW2-4G	SignWare2 Player with 4GB Flash with PS5VDC3A
AP-SNW-W	SignageManager Software

Many leading companies have recognized and embraced the innovation of SmartAVI's technologies and have successfully incorporated them into their organizations. Clients of SmartAVI include:



SmartAVI, Inc. / Twitter: smartavi - 11651 Vanowen St. North Hollywood, CA 91605
Tel: (818) 503-6200 Fax: (818) 503-6208 - <http://www.SmartAVI.com>

Smart-AM
SMART AUDIO VIDEO INNOVATION

Made in the USA

www.smartavi.com