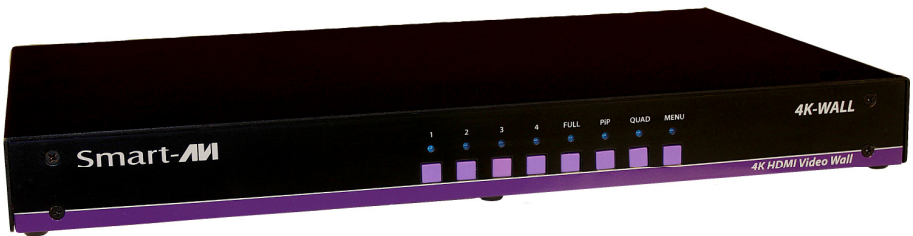


**Smart-AM**  
SMART AUDIO VIDEO INNOVATION

# 4K-WALL

**HDMI/DVI 2x2 Video Wall Controller and  
4x4 Matrix Switch**



The ideal video wall controller and video matrix hardware solution with  
On Screen Display and stunning 4K resolution, no software required

**USER MANUAL**

## WHAT'S IN THE BOX?

PART NO.	QTY.	DESCRIPTION
SM-4KWL-S	1	4X4 Port HDMI, Real-Time Matrix with integrated video wall Includes: [SM-4KWL]
Power supply cord	1	(CCPWR06)
RS-232 Cable	1	RS-232 (male-to-female)
SRC-2A	1	IR Remote Control
SM-EYE	1	IR receiver

## TABLE OF CONTENTS

INTRODUCTION & FEATURES	3
TECHNICAL SPECIFICATIONS	4
APPLICATIONS	5
HARDWARE INSTALLATION	6
USING THE FRONT PANEL CONTROL	7
ON-SCREEN DISPLAY	8
USING IR REMOTE CONTROL	8
USING RS-232 CONTROL	9
USING THE TCP/IP CONTROL	11
FIRMWARE UPDATE	12
LIMITED WARRANTY STATEMENT	14

## INTRODUCTION

To create a four-screen video wall with four HD video inputs, the 4K-Wall video wall controller and matrix provides a truly simple plug-and-play hardware solution with incredible 4K resolution. With four inputs and four outputs, users can arrange their content in numerous ways, providing unique functionality by combining the abilities of a video wall hardware controller and a matrix. The 4K-Wall is HDCP compliant.

Users can stretch one large image over four screens, send an input to each screen, send four images to each screen or create a customizable Picture-in-Picture display. Better still, there's no software required, as all content management options are effortlessly controlled via the 4K-Wall video wall controller unit itself. There's no need for drivers or updates, just connect the HD inputs and HD screens to the controller and it's ready to go.

## FEATURES

- Stand-Alone Unit, Requiring no Additional Hardware or Software
- Plug-and-play ready
- Four HDMI inputs and four HDMI outputs
- DVI-D up to 1920x1200 input
- Learns any EDID
- Internal EDID database
- Multiple configurations
- Easy control and access
- HDCP and HDMI 1.4 compliant
- Supports IR and RS-232
- 4K2K/3840x2160 total (with 1920x1080 monitors)

## TECHNICAL SPECIFICATIONS

### VIDEO

Video Bandwidth	Single-link 340MHz [10.2Gbps]
Resolution HDTV	480i,480p,720i,720p,1080i,1080p
PC Resolution	800 x 600 up to 1920 x 1200
Input Video Signal	1.2 volts
Input DDC Signal	5 volts
Single Link Range	1080p
Format	HDMI 1.4
DVI Compliance	Single-link DVI-D 2.0
Output Cable Length	Up to 20 ft.
HDCP Compliance	1.0/2.0
Video Bandwidth	Single-link 340MHz [10.2Gbps]
Input Interface	(4) HDMI
Output Interface	(4) HDMI
Connector	Type A [19-pin female]

### CONTROL

Front Panel	Tact Switches
RS-232	DB9 (female)
IR Remote Control	IR RC5
TCP/IP	Optional Ethernet Control

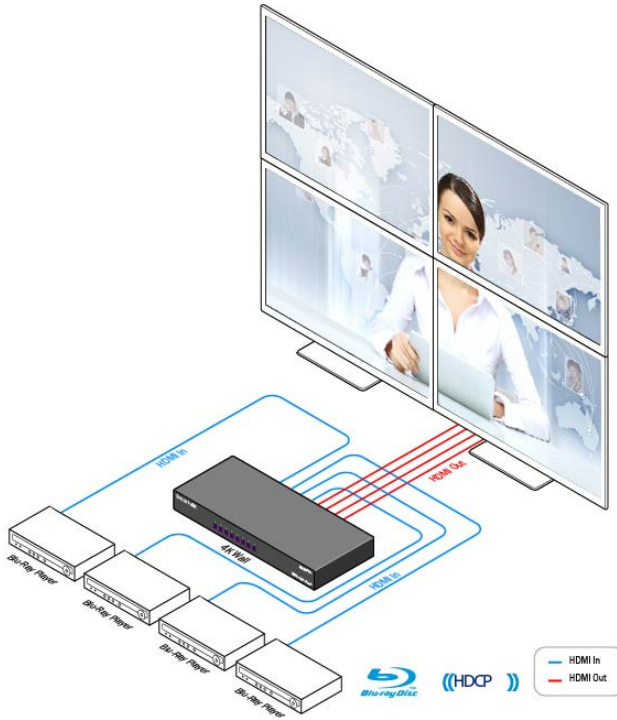
### POWER

Requirements	Internal 100-240 VAC
Power Supply Approvals	UL, CE, CSA, CEC, RoHS

### MECHANICAL

Height	1.70 in. (1U)
Width	17 in. (431.8 mm.)
Depth	10.2 in. (259 mm.)
Weight	4.05 lbs. (1.84 kg.)

# APPLICATION DIAGRAM



## APPLICATIONS

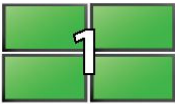
- Corporate or Educational Presentations
- Airport Installations
- Wall Displays
- Digital Signage
- Dealer Rooms
- Control Rooms
- Shopping Centers
- Security
- Point-of-Sale
- Entertainment Venues
- Corporate Lobbies
- Restaurants

# HARDWARE INSTALLATION

1. Turn off the 4K-Wall.
2. Connect the (4) HDMI inputs (i.e. PC, Blu-Ray Player, Digital Signage, etc.) to the (4) HDMI INPUT ports of the 4k-Wall using HDMI cables.
3. Connect the (4) monitors to the (4) HDMI OUTPUT ports of the 4k-Wall using HDMI cables for HDMI monitors and TVs, or HDMI-to-DVI adapters for DVI displays.
4. Connect the IR receiver to the IR input jack at the back of the 4k-Wall.
5. Optionally connect an RS-232 cable from PC to the RS-232 port of the unit for additional control.
6. Turn on the 4k-Wall.
7. Wait for a few seconds for the unit to initialize.

## AVAILABLE CONFIGURATIONS

There are four different configurations or modes that are easy to navigate through with the 4k-Wall. Switching between the display modes is simple. The front panel buttons, IR remote control, OSD, RS-232 console command, and TCP/IP can be used to switch between modes.



**VIDEO WALL MODE:** Users can select any of the four HD inputs and project the image across four HD screens (2x2 configuration). With screen resolution of 1920x1080, users can create a stunning 4K resolution video wall display.



**INDIVIDUAL MODE:** Users can take advantage of full matrix functionality by routing any of the four HD inputs to any of the four HD screens, with supported resolution up to 1920x1080 on each screen



**QUAD MODE:** Users can divide each screen into four sections with all four inputs playing on each screen. Users can place each screen in different locations, further enhancing the 4K-Wall's matrix functionality.



**PIP MODE:** Users can create Picture-in-Picture (PiP) displays on each screen using all four inputs, with one large HD source and three accompanying PiP sources alongside.

# CONTROL USING THE FRONT PANEL

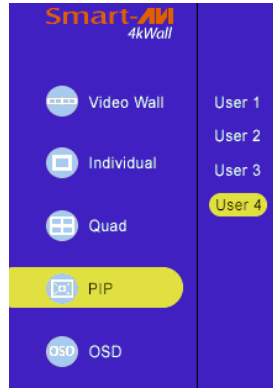
## Front Panel Buttons



- To switch to Video Wall Mode, press the QUAD and MENU buttons simultaneously and then press the desired channel 1, 2, 3, or 4.
- To switch to Individual Mode:
  1. Press the FULL button on the front control panel
  2. Press the Output Channel (1, 2, 3, or 4).
  3. Press the Input Channel (1, 2, 3, or 4).Ex. Input 4 to output 2 = "FULL, 2, 4"
- To switch to Picture in Picture mode, press the PiP button and then select the desired channel 1, 2, 3, or 4.
- To switch to Quad Mode, press the QUAD button and then select the desired channel 1, 2, 3, or 4.

## CONTROL USING ON-SCREEN DISPLAY (OSD)

On Screen Display (OSD) gives users great flexibility and ease of use when looking to manage their video wall. It can be operated with the IR Remote Control and through the Front Panel Buttons.



## IR REMOTE CONTROL

The 4K-Wall will only respond to the remote control unit provided in the box. Below is the list of commands on how to control using the remote control:

**DATA:** Activates the OSD

**Ch. DOWN:** Navigate down through the options

**Ch. Up:** Navigate up through the options

**Vol. +:** Select

**Vol. -:** Back

**ENTER:** Enter the command

**ESC:** Exit OSD

## OSD CONTROL WITH FRONT PANEL

To change modes with the OSD simply navigate using the following buttons on the front panel:

**1:** Down

**2:** Up

**3:** Back

**4:** Select

**FULL:** Enter

Simply scroll to the mode desired with the up or down button, select the mode, select the appropriate channel and enter.







## USING RS-232 CONTROL

The 4K-Wall may also be controlled via RS-232 commands. This feature requires an RS-232 card installed on your computer or a USB to RS-232 adapter. Below are instructions on how to properly create an RS-232 connection between a PC the 4K-Wall

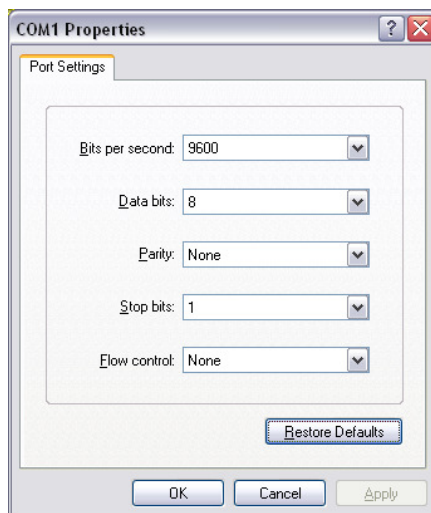
### Establish a connection to 4K-Wall:

1. Connect a *straight-through* male-to-female RS-232 cable to the RS-232 connector on the PC.
2. Connect the other end of the cable to the RS-232 port of the 4K-Wall.
3. Power on the device.

CONNECTOR	PIN	NAME	DESCRIPTION
<b>DB9 MALE - RECEIVE</b> 	2	RxD	Receive Data on DB9 Male
	3	TxD	Transmit Data on DB9 Male
	5	SGND	Ground
<b>DB9 FEMALE - TRANSMIT</b> 	2	TxD	Transmit Data on DB9 Female
	3	RxD	Receive Data on DB9 Female
	5	SGND	Ground

### Setting up the Terminal Application:

1. Run HyperTerminal on the PC (or use the terminal client of your choice).
2. Select the correct COM Port on the PC.
3. Use the following settings to create a connection to the device: **115200, 8, N, 1**. (see settings on right).
4. Be sure that Flow Control is *None*.



## USING RS-232 CONTROL (continued)

There are two primary modes of operation for 4K-WALL: *Command Mode* and *CLI Mode*. When connecting to the 4K-WALL via RS-232, it will start in Command Mode (see Command Mode on p. \*\* for options). CLI Mode is a more user-friendly way of operating the DVR16x16 and includes instructional menus. The following section details the use of the CLI Mode.

When you connect to the 4K-WALL to a computer via an RS-232 connection, you will see the following screen on startup:

```
*****4KWall v.1.20.1*****
build date Mar  7 2014 10:53:44
...
...
4KWall Initialization complete
```

**CLI Mode:** To enter CLI Mode type “clion” followed by the <enter> key and you will see the following prompt:

```
CLI enabled!
```

To display the 4K-WALL help menu type “?” then <enter> key:

```
4KWall v.1.20.1 CLI command list
=====
i      List system information
f      Full f [Input] [Output]
q      Quad q [USER]
p      PiP p [Main Screen<1-4>]
v      VideoWall
o      Output o [ 1-1080P60 | 2-720P | 3-1080P30 ]
rEDID <1-4> Read a EDID for an input
wEDID <1-4/a> < 1-ACER P241w | 2-Gateway FHX2300 | 3-local monitor>
reset  Reset 4K-Wall
load  load osd image
?      CLI command list
```

- To see the list of inputs and the output mode, type “i” then <enter> key.
- To read the EDID for an input, type in “rEDID N” then <enter>, where “N” is the input channel (1 to 4).
- To program an EDID to the inputs, type in “wEDID N M” then <enter>, where “N” is the input channel (1 to 4, or a = all), and “M” is the EDID mode.  
Ex. “wEDID a 3” is to learn the EDID of the local monitor to all inputs
- To do a power reset on the 4K-Wall, type “reset” followed by <enter> key.

# USING RS-232 CONTROL (continued)

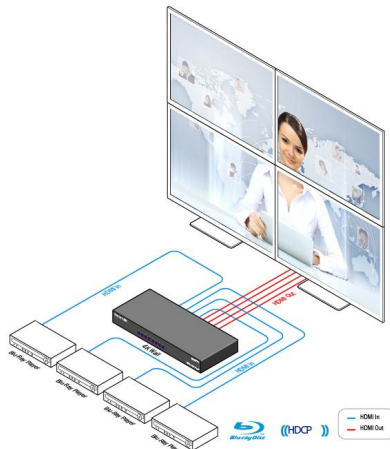
**Command Mode:** allows raw commands to be sent to the 4K-WALL to control its various functions without the use of a menu or prompt.

Mode	Console Command	Description & Example
Video Wall Mode	//Vx<CR>	Stretch an input across four screens (2x2). ex. “//V3<CR>” Video wall on channel 3
Individual Mode	//Fxy<CR>	Route an input to an output on full screen; x = input, y = output ex. “//F31” Full mode; input 3 to output 1
Quad Mode	//Qx<CR>	4 inputs on each screen, equally displayed. ex. “//Q2<CR>” quad mode; channel 2 as user control
PIP Mode	//Px<CR>	4 inputs on each screen; “x” input is the largest area. ex. “//P3” Picture in picture mode; input 3 selected
Reset	//RESET<CR>	Resets the 4K-Wall box

<CR> is carriage return (0x0D). All commands sent from PC end with <CR> (or the <enter> key if using HyperTerminal).

## TCP/IP CONTROL

4K-WALL TCP/IP control is a feature that allows mode switching and other configurations to be controlled remotely via HTTP or TELNET. Manage the switching functions of your matrix with ease from anywhere in the world. You can save input/output configuration presets for easy access. TELNET access provides transparent command control of your matrix, perfect for use with automated third-party control software. For more information, visit [www.smartavi.com](http://www.smartavi.com).

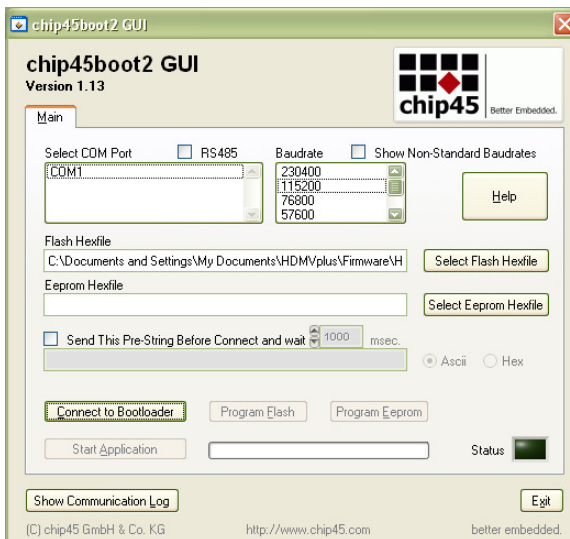


# FIRMWARE UPDATE

The firmware of the 4K-WALL can be upgraded by the end-user. Please contact [info@smartavi.com](mailto:info@smartavi.com) for more details.

Below are instructions on how to upgrade the firmware of your 4K-WALL:

1. Power OFF the 4K-WALL.
2. Connect the RS-232 cable from computer to the RS-232 port of the 4K-WALL.
3. Download and install the chip45boot2 GUI:  
[http://download.chip45.com/chip45boot2\\_GUI\\_V1.13.zip](http://download.chip45.com/chip45boot2_GUI_V1.13.zip)
4. Open the chip45boot2 GUI.
5. Click the Select *Flash Hex file* button and browse for the firmware file.
6. Power ON the 4K-WALL, then click the *Connect to Bootloader* button on the *chip45boot2*. The *Status* indicator on the lower right hand of the GUI should be green if the connection is successful. If not successful, click the *Connect to Bootloader* button again.
7. Click *Program Flash* to upload the hex file. When finished uploading, the *Status* indicator should say "Done".
8. Click *Exit* and open PuTTY or HyperTerminal and verify if you have successfully loaded the firmware.



## NOTES

# LIMITED WARRANTY STATEMENT

## **A. Extent of limited warranty**

1. SmartAVI Technologies, Inc. warrants to the end-user customers that the SmartAVI product specified above will be free from defects in materials and workmanship for the duration of 1 year, which duration begins on the date of purchase by the customer. Customer is responsible for maintaining proof of date of purchase.
2. SmartAVI limited warranty covers only those defects which arise as a result of normal use of the product, and do not apply to any:
  - a. Improper or inadequate maintenance or modifications
  - b. Operations outside product specifications
  - c. Mechanical abuse and exposure to severe conditions
3. If SmartAVI receives, during applicable warranty period, a notice of defect, SmartAVI will at its discretion replace or repair defective product. If SmartAVI is unable to replace or repair defective product covered by the SmartAVI warranty within reasonable period of time, SmartAVI shall refund the cost of the product.
4. SmartAVI shall have no obligation to repair, replace or refund unit until customer returns defective product to SmartAVI.
5. Any replacement product could be new or like new, provided that it has functionality at least equal to that of the product being replaced.
6. SmartAVI limited warranty is valid in any country where the covered product is distributed by SmartAVI.

## **B. Limitations of warranty**

TO THE EXTENT ALLOWED BY LOCAL LAW, NEITHER SMARTAVI NOR ITS THIRD PARTY SUPPLIERS MAKE ANY OTHER WARRANTY OR CONDITION OF ANY KIND WHETHER EXPRESSED OR IMPLIED, WITH RESPECT TO THE SMARTAVI PRODUCT, AND SPECIFICALLY DISCLAIM IMPLIED WARRANTIES OR CONDITIONS OF MERCHANTABILITY, SATISFACTORY QUALITY, AND FITNESS FOR A PARTICULAR PURPOSE

## **C. Limitations of liability**

To the extent allowed by local law the remedies provided in this warranty statement are the customers sole and exclusive remedies

TO THE EXTENT ALLOWED BY LOCAL LAW, EXCEPT FOR THE OBLIGATIONS SPECIFICALLY SET FORTH IN THIS WARRANTY STATEMENT, IN NO EVENT WILL SMARTAVI OR ITS THIRD PARTY SUPPLIERS BE LIABLE FOR DIRECT, INDIRECT, SPECIAL, INCIDENTAL, OR CONSEQUENTIAL DAMAGES WHETHER BASED ON CONTRACT, TORT OR ANY OTHER LEGAL THEORY AND WHETHER ADVISED OF THE POSSIBILITY OF SUCH DAMAGES.

## **D. Local law**

To the extent that this warranty statement is inconsistent with local law, this warranty statement shall be considered modified to be consistent with such law.

# Smart-**AVI**

SMART AUDIO VIDEO INNOVATION

## NOTICE

The information contained in this document is subject to change without notice. SmartAVI makes no warranty of any kind with regard to this material, including but not limited to, implied warranties of merchantability and fitness for particular purpose.

SmartAVI will not be liable for errors contained herein or for incidental or consequential damages in connection with the furnishing, performance or use of this material.

No part of this document may be photocopied, reproduced, or translated into another language without prior written consent from SmartAVI Technologies, Inc.



**Designed and Manufactured in the USA**

**800.AVI.2131**

**Tel: (818) 503-6200 Fax: (818) 503-6208**

**11651 Vanowen St. North Hollywood, CA 91605**

**SmartAVI.com**

*Many industry-leading companies have recognized the innovation and power of SmartAVI's technologies and have successfully implemented them within their systems. Users of SmartAVI technology include:*





**Designed and Manufactured in the USA**

**800.AVI.2131**

**Tel: (818) 503-6200 Fax: (818) 503-6208  
11651 Vanowen St. North Hollywood, CA 91605**

**SmartAVI.com**