



Quick Start Manual

SIGNAGEPRO DIGITAL SIGNAGE PLAYER



version 4.3.8

What's in the Box?

PART NO.	QTY	DESCRIPTION
AP-SNCL*	1	SignagePro Client* - <i>Figure A</i>
ASUSBKEY	1	Unique USB Key - <i>Figure B</i>
AP-SNSV-WS	1	SignageServer Software Installation CD - <i>Figure C</i>
PS12VDC5A*	1	12-Volt 5-Amp Power Supply* - <i>Figure D</i>
CCPWR06	1	6-Foot Power Cable - <i>Figure E</i>

Server Requirements

Processor	Intel Pentium 4 HT
Operating System	Windows XP Professional, Windows 2003
Memory	1GB RAM
Networking	10/100/1G

1. Getting Started

This quick setup guide will instruct you on how to connect and configure the SignagePro player and how to install the SignageServer software onto your server (Host PC). For more information, see the full manual.

To ensure proper installation of the server software:

- Please make sure you are running Windows XP Professional with Service Pack 2 or 3, Windows 2003 or Windows Vista.
- Make sure that you are logged into the server as the system administrator.
- Turn off the Windows firewall. (see *Figure 1.1* for Windows XP)
You can alternately add SignagePro under the exceptions tab. (*Figure 1.2*)

The port used for communication is '13325' UDP and TCP. This will be used when forwarding ports in your router, when using SignagePro via WAN.

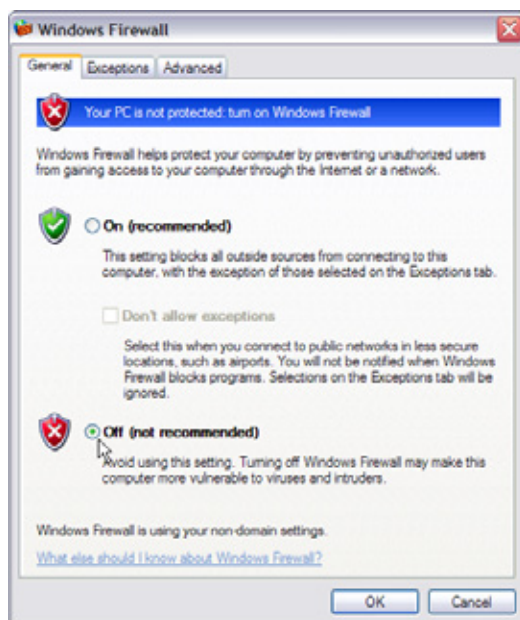


Figure 1.1

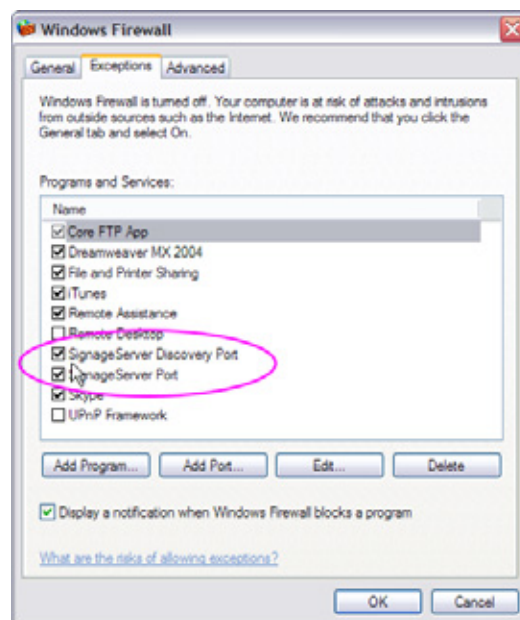


Figure 1.2

2. Installing SignageServer

SignageServer requires a unique USB key and serial number to be installed. You will find your serial number on back of the SignageServer CD sleeve. In addition, you must complete the online registration for your copy of SignageServer. If you do not register within the thirty-day window, your SignageServer software will become disabled. A registration window will open automatically. If you wish to register at a later date, simply select Help/Registration.

Note: For proper installation of the SignageServer software, you must insert the USB protection key provided into any available USB port on your PC **BEFORE** you install the SignageServer software. Once inserted, Windows will ask for the drivers; you must cancel that request because the drivers will be installed during installation of the software.

1. Double click on the SignageServer_Setup executable. Read the License Agreement then click 'I Agree'
2. Enter in your name and organization and enter the unique serial number (IN ALL CAPS) provided to you.
Important: When entering the serial number, please make sure it is typed with ALL CAPS, or registration will not give you a 30 day grace period. (Figure 2.1)
3. The next window will allow you to choose components, make sure "SignageServer" is checked. (Figure 2.2)
4. Choose the installation location you would like to install the SignageServer. Click 'Next'
5. Before the installation completes, you will be asked to create a password for the Administrator account. You must sign in as the Administrator for the first time you load the SignagePro Manager. For more information on the User Manager, go to Section 2 of the full manual.

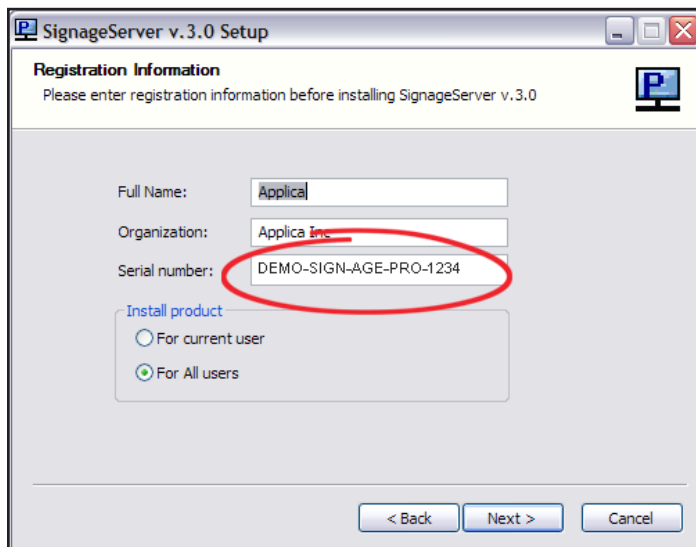


Figure 2.1

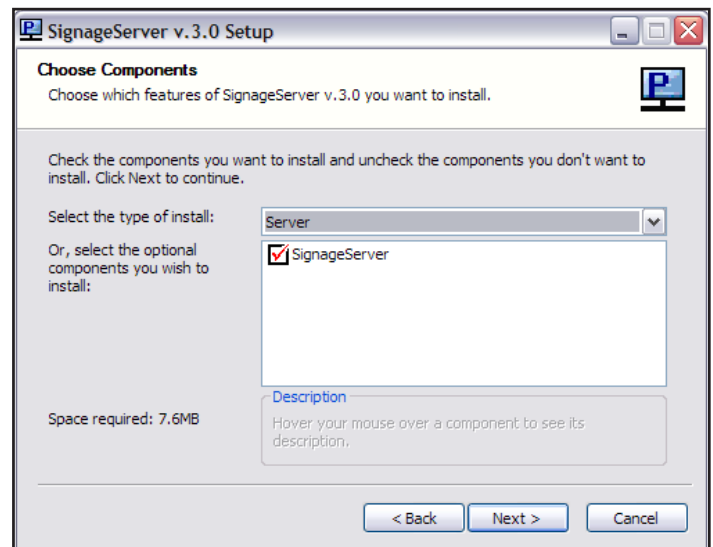


Figure 2.2

3. Connecting the SignagePro Client

1. Setting up the SignagePro Client
 - a. Connect the power supply cable to the SignagePro client and plug the cable into a grounded power outlet.
 - b. Connect a USB mouse and keyboard to the USB ports.

- c. Attach the VGA/DVI-D cable from the monitor or display to the VGA/DVI-D port on back of the client.
 - d. Connect the SignagePro client to a router using CAT5 cable. (If you will be using a wireless router, please refer to your router's manual for additional information).
 - e. Press the power button to start the SignagePro client.
 - f. Turn on the display connected to the client.
2. Upon the initial boot you may receive an error message stating that your username and password are incorrect.
 - a. Click on the 'Change Configuration' button to setup user name and password.
 - Use the username and password you used during the SignageServer setup. (Step 2.5)
 - You have the option of using any user you create in the SignagePro User Manager.
 - Once you have entered your new username and password click the 'Apply' button to log into the SignagePro client.

4. Configuring the SignagePro Client

1. Once you've logged in, use the keystrokes described in **Table 4.1** to navigate the various menus and functions.

Table 4.1

KEYSTROKE	FUNCTION
ALT + CTRL + 1	Displays this navigation menu.
ALT + CTRL + 2	Setup Signage options; such as login username and password, IP address, player name, schedule (Figure 4.2)
ALT + CTRL + 3	Setup network configuration. Use this option for static IP or for use over WAN. If your network uses DHCP you will not use this option. (Figure 4.3)
ALT + CTRL + 4	Displays the SignagePro Information Window. Information includes; time & date, download status of your media, current version of SignagePro and connection status.
ALT + CTRL + 5	Allows user to use the Linux terminal.
ALT + CTRL + 6	Disconnects USB flash disks
ALT + CTRL + 7	Turns media on/off
ALT + CTRL + 9	Shut down and turn off the SignagePro client.



Figure 4.2

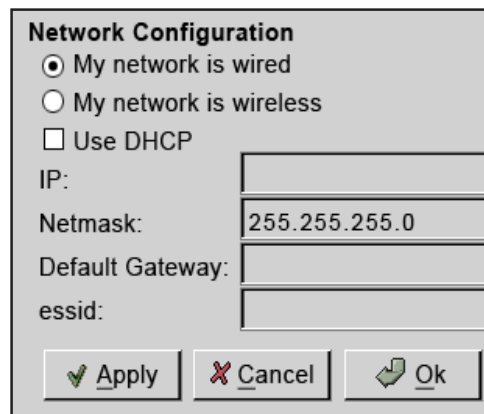


Figure 4.3

2. The SignagePro client is designed to automatically connect to the network using **DHCP**. If your network is not set up with **DHCP**, it will be necessary to statically assign an IP address to the client.
3. To do this, press ATL + CTRL + 3 to open the Network Configuration panel.
4. Here you can choose the type of network you will be using and assign an IP address to the client. (Figure 4.3)
5. After configuring the network, click 'OK' to save your settings.

5. Running SignageServer Software for the first time

1. Double click on the SignageServer Station Manager icon either on your desktop or start menu.
2. You will first be prompted with a 'Server Logon settings' dialog box. The default IP address is 127.0.0.1. In the user name and password fields use the new Administrator user and password you created in the installation process and click 'OK'. (Figure 5.1)
3. Once the SignageServer Station Manager is loaded. You will see the following;
 - Connected SignagePro clients
 - Loopback IP. (127.0.0.1)
 - Your username and password. Click Save Password to stay logged in. (Figure 5.2)

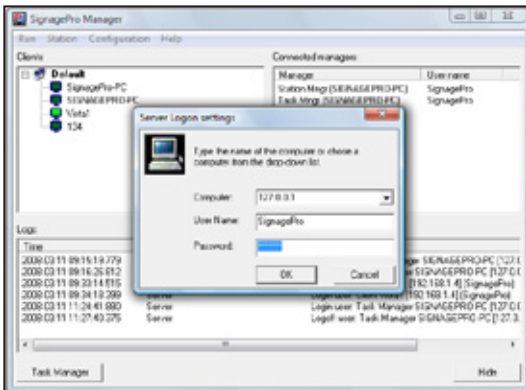


Figure 5.1

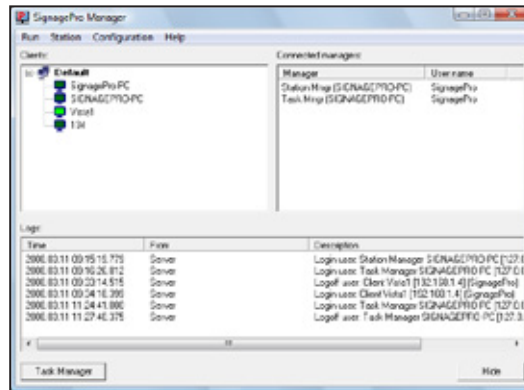


Figure 5.2

The last step is to connect to the client and start configuring the digital signage presentation using the SignagePro task manager. During the first attempt to connect to a client, you may be asked to by the windows firewall to unblock, or keep blocking SignagePro Manager. It **MUST** be **UNBLOCKED** for the server to communicate with the client.

6. Using the SignagePro Server Software

For instructions on how to create a presentation, consult the full manual - available online at SmartAVI.com.

Specifications

Form Factor	Mini-ITX (6.70 inches by 6.70 inches [170mm x 170mm]) Board z-height is 20mm
Processor	Passively cooled, integrated single core Intel® Atom™ processor N270 with a 533 MHz system bus and 512KB L2 cache
Memory	Single 200-pin DDR2 SO-DIMM connector: <ul style="list-style-type: none"> • Support for DDR2 533 MHz SO-DIMMs (DDR2 800 MHz and DDR2 667 MHz validated at 533 MHz) • Support for up to 2 GB single-channel system memory
Chipset	Passively cooled, mobile Intel® 945GSE Express Chipset: <ul style="list-style-type: none"> • Intel® 82945GSE Graphics and Memory Controller Hub (GMCH) • Intel® 82801GBM I/O Controller Hub (ICH7-M)
Audio	Realtek ALC662* codec for 2+2ch (multi-streaming) Intel® High Definition Audio (Intel® HD Audio): <ul style="list-style-type: none"> • Front panel microphone/headphone header • S/PDIF digital audio header • Internal mono speaker header
Video	Intel® Graphics Media Accelerator 950 (Intel® GMA 950) dual-onboard graphics support: <ul style="list-style-type: none"> • Analog displays (VGA) • Digital displays (DVI-D)
I/O Control	Legacy I/O controller: <ul style="list-style-type: none"> • 1 PS/2 header • 2 serial headers • 1 parallel port header
LAN Support	Realtek 10/100/1000 Ethernet Controller
Peripheral Interfaces	3 USB 2.0 ports 2 Serial ATA 3.0 Gb/s connectors (supporting IDE and AHCI) 1 power header for storage devices 1 parallel ATA port (44-pin mobile header)
Expansion Capabilities	One PCI Express* Mini Card slot for low-profile expandability (I/O shield can mechanically support up to three external antennae for use with wireless adapter)
Operating System	OS Embedded Linux
Dimensions	Length: 8" (20.32 cm) Width: 8.375" (21.273 cm) Height: 2.25" (5.715 cm)
Formats Supported	Video (AVI, MPEG1, MPEG2, MPEG4, WMV, FLA, DIVX) Flash (SWF) Still Images (JPEG, GIF, BMP, PNG) WebPages (URL) Adobe Acrobat (PDF) PowerPoint (PPT) Audio (MP3, WMA) News (RSS)

Notes

NOTICE

The information contained in this document is subject to change without notice. Smart-AVI makes no warranty of any kind with regard to this material, including but not limited to, implied warranties of merchantability and fitness for any particular purpose.

Smart-AVI will not be liable for errors contained herein or for incidental or consequential damages in connection with the furnishing, performance or use of this material.

No part of this document may be photocopied, reproduced or translated into another language without prior written consent from Smart-AVI.

For more information, visit www.smartavi.com.



SmartAVI, Inc. / Twitter: smartavi
11651 Vanowen St. North Hollywood, CA 91605
Tel: (818) 503-6200 Fax: (818) 503-6208
<http://www.SmartAVI.com>