



Instructional Guide

Creeping Line Editor

www.smartavi.com

SignagePro Creeping Line Editor enables you to create a scrolling marquis on your screen. This tutorial will walk you through creating a Creeping Line and applying it as a task.

1. Opening the Creeping Line Editor.
 - a. From the SignagePro Server Manager select 'Run' and click 'Creeping Line Editor' **(Figure 1.1)**

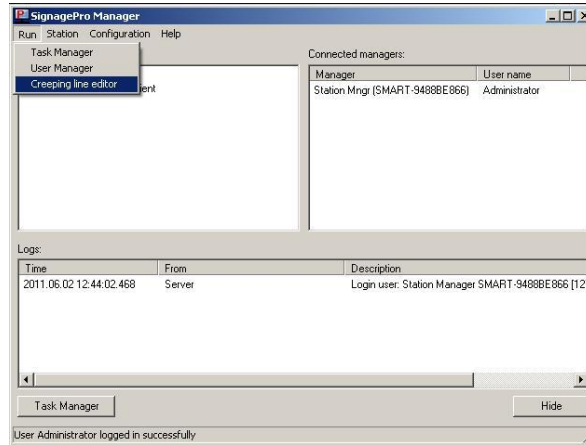


Figure 1.1

2. To create and edit scrolling text, select 'Options' and click 'Creeping line options' **(Figure 1.2)**
 - a. In the 'General' tab Creeping Line Property Sheet you are given several options;
 - b. Input text: Type your text directly into the editor. **(Figure 1.3)**
 - c. Use RSS: Input the URL of the RSS feed of your choice. **(Figure 1.4)**
 - d. Control the speed of your scrolling text.
 - e. Preview the text directly on your desktop.

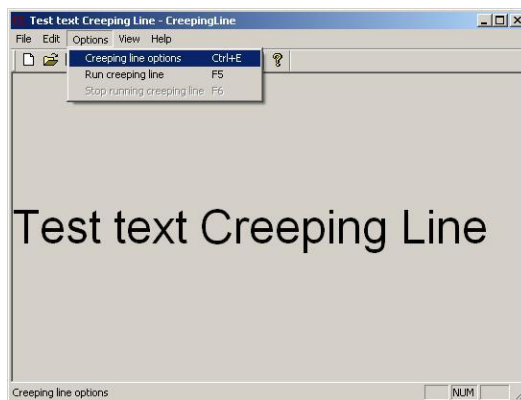


Figure 1.2

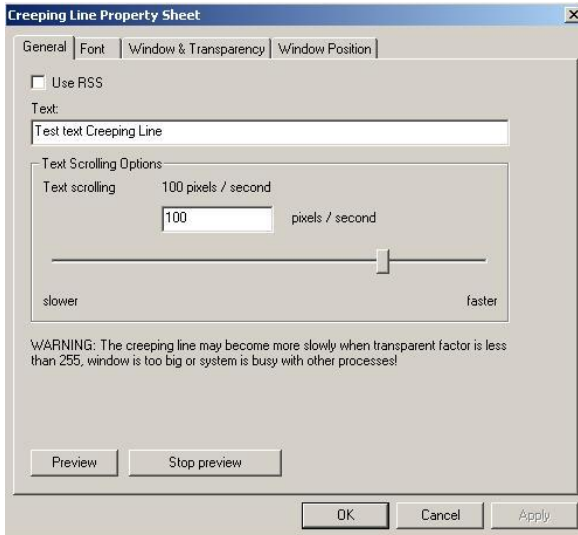


Figure 1.3

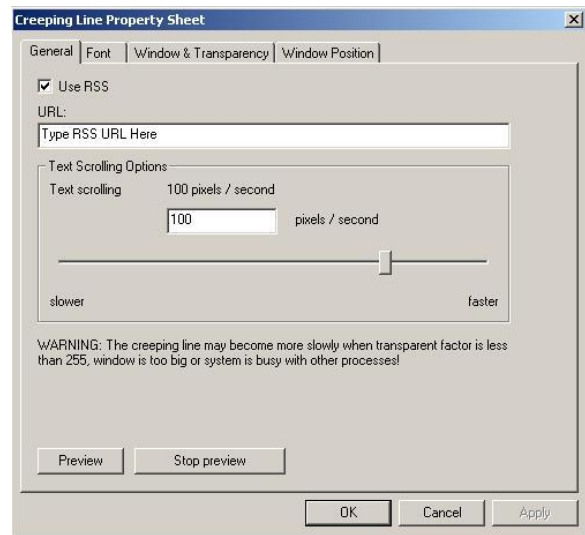


Figure 1.4

3. Customizing fonts

- a. Select the 'Font' tab to adjust the size, style and color of your font. (**Figure 1.5**)

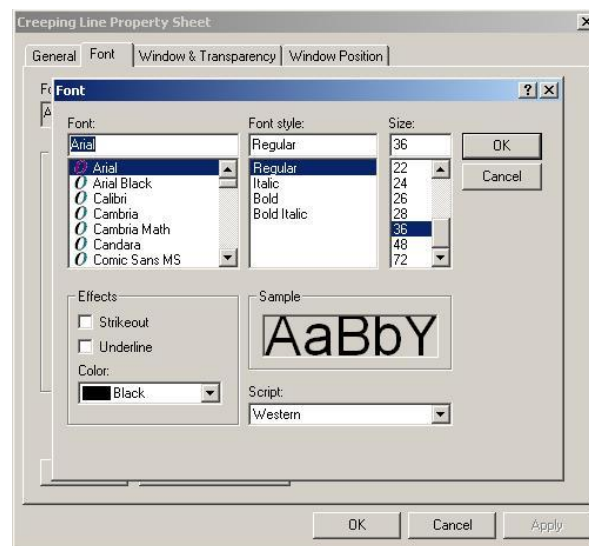


Figure 1.5

4. Adjust window text and transparency. (**Figure 1.6**)

- a. In the Text Window and Transparency dialog box you are given several adjustment options.
 - i. Background Color
 - ii. Window Border:
 - Transparency
 - Transparent Color

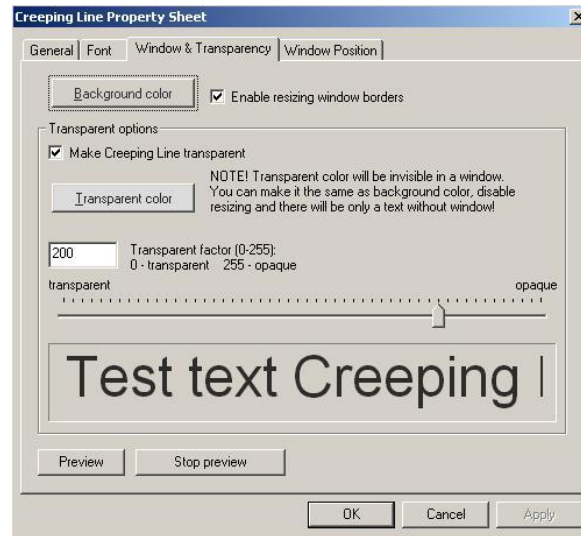


Figure 1.6

5. Set the position of your creeping text.
 - a. The Window Position dialog lets you decide where you would like the scrolling text to appear on your screen.
 - i. You have the option of either docking your window to the top or bottom of your screen.

(Figure 1.7)

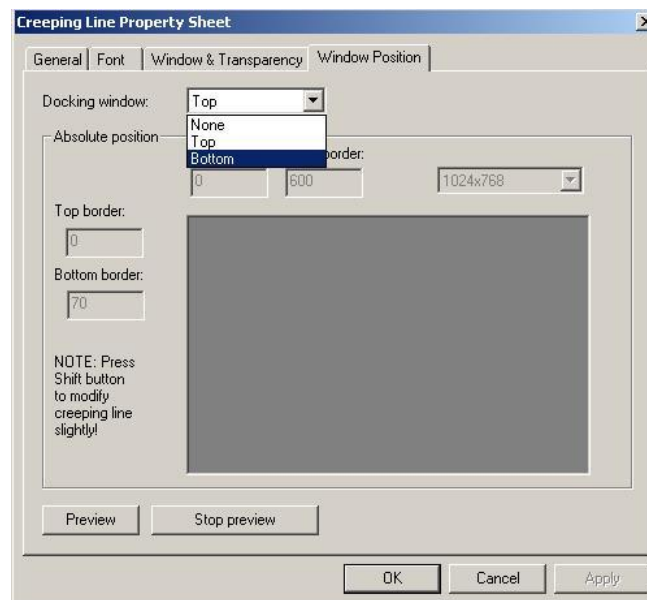


Figure 1.7

6. Save your changes.

- a. To accept your changes click the 'OK' button on your Creeping Line Property Sheet.
- b. To save your work select 'File' and click either 'Save' or 'Save As' from the section menu.
(Figure 1.8)
- c. Name your file and save on your hard drive.

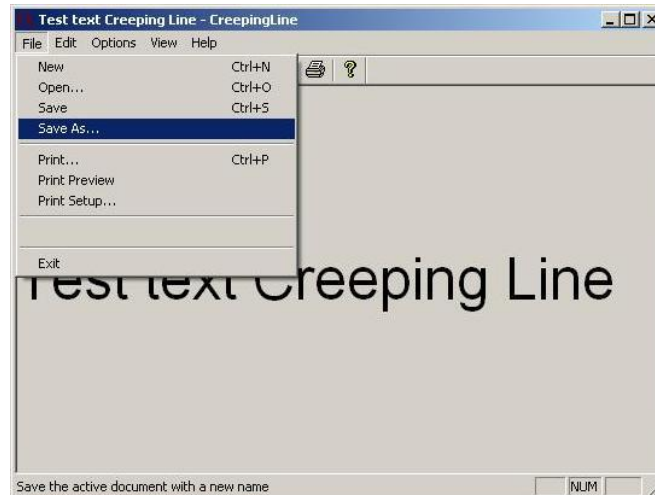


Figure 1.8

The new Creeping Line Manager allows SignagePro users to add multiple Creeping Lines in Tasks rather than in a Schedule. You can now add multi Creeping Lines into specific Tasks.

7. Create a Creeping Line task
 - a. At the top, select Task and select 'New Task'.
 - b. Select 'Background' as the task type.
 - c. Click 'Browse..' and select the Creeping Line file(.clf) located on your hard drive.
 - d. Click 'Ok' to Save and you are now able to add the task to any schedule.