



Instructional Guide

Display Configuration

In this tutorial, you will be walked through the steps to configure your display to be used with the SignagePro client. Connect a keyboard and mouse to the SignagePro client before continuing.

1. Accessing Boot Configuration Console
 - a. Power on your SignagePro client.
 - b. At the SignagePro splash screen, press F2 to access the boot configuration console
2. Accessing Display Configuration
 - a. Once you're at the **'bash-3.2#'** command line, type: **'axorgcfg'**
 - b. After typing **'axorgcfg'**, you should now be at the Main Menu. (**Figure 1.1**)

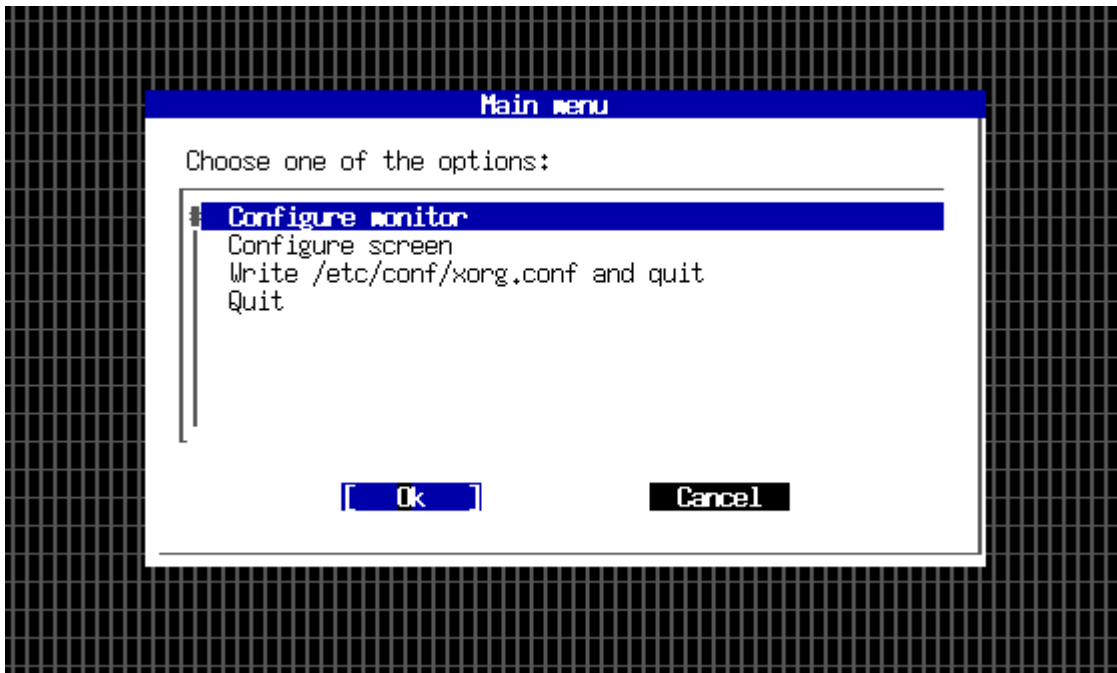


Figure 1.1

3. Configuring Monitor
 - a. At the Main Menu, use ARROW KEYS to select 'Configure monitor' and press Enter.
 - b. At the first screen, select 'Next'. (**Figure 1.2**)
 - c. In the second screen, you can manually enter your display's Horizontal Sync Range or select the highlighted choice in the figure. Keep in mind that if you enter or select a range that is incompatible with your display, your display will not receive a proper signal and will not display anything. (**Figure 1.3**)
 - d. In the third screen, you can manually enter your display's Vertical Sync Range or select one of the default settings. Keep in mind that if you enter or select a range that is incompatible with your display, your display will not receive a proper signal and will not display anything. (**Figure 1.4a**)
 - e. If you are unsure of your Vertical Sync Range, type '50 – 60' as in **Figure 1.4b**.

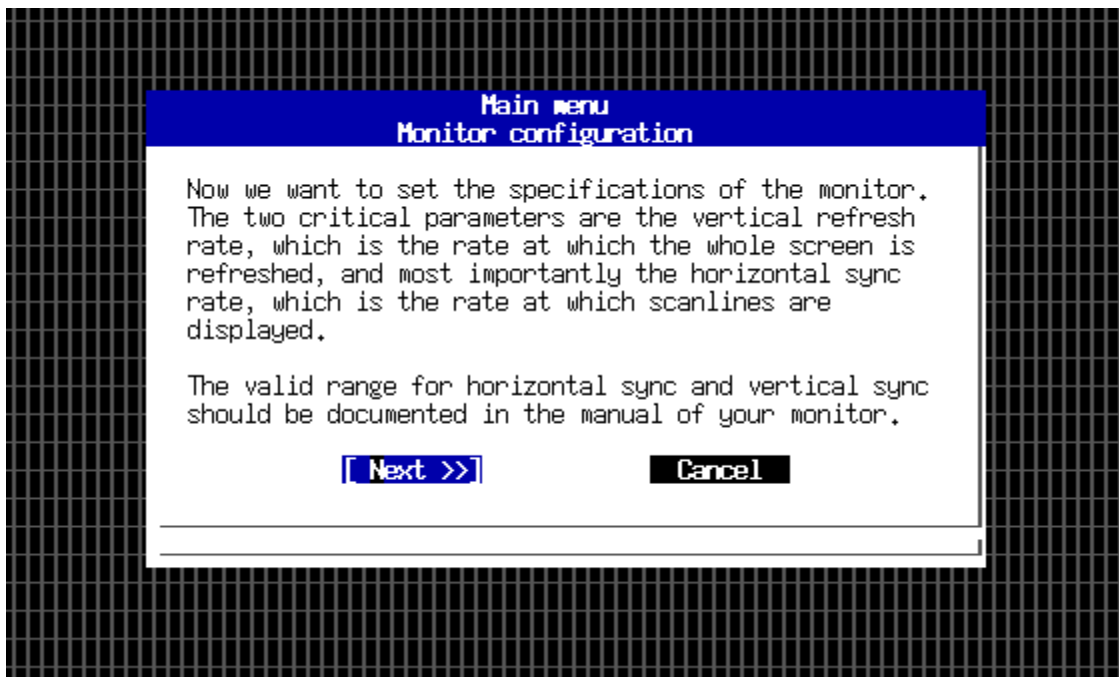


Figure 1.2

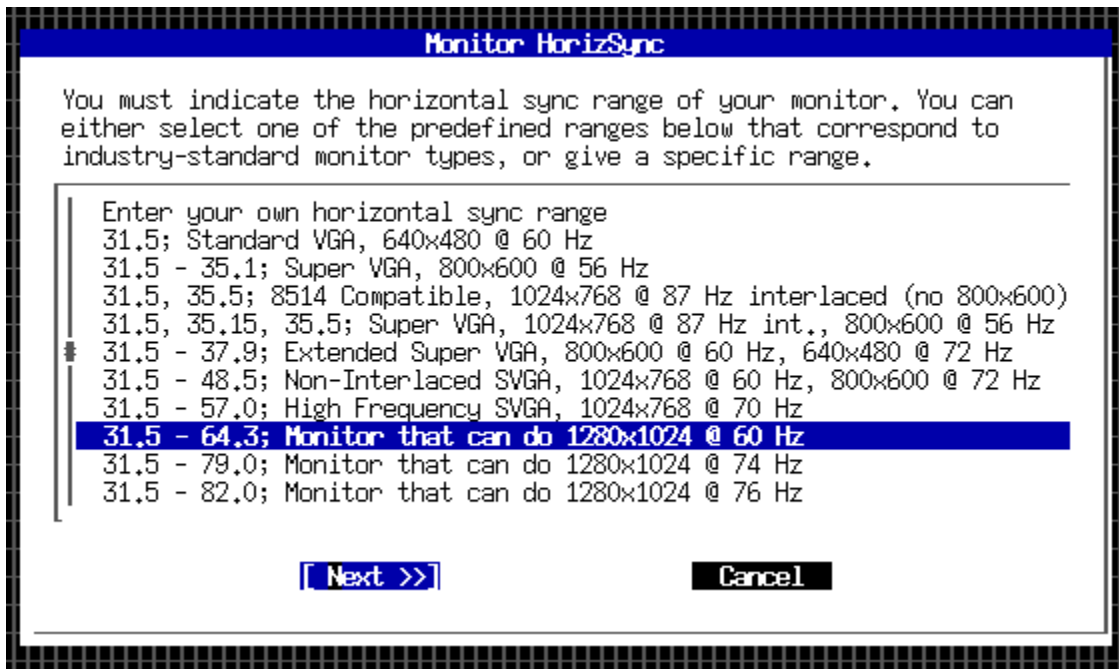


Figure 1.3

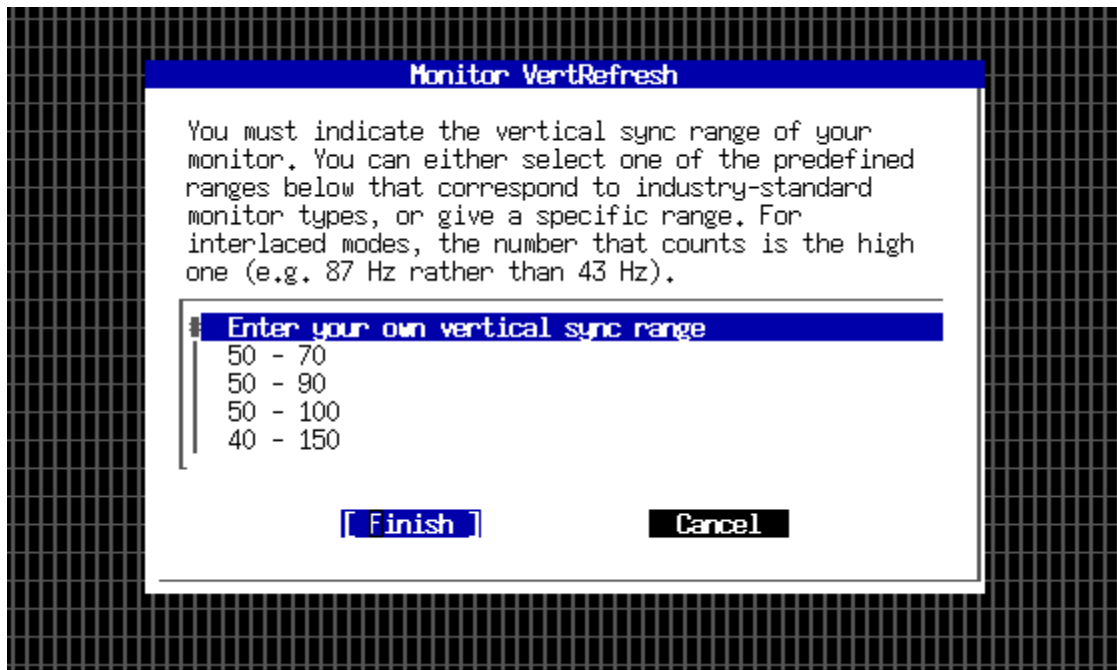


Figure 1.4a

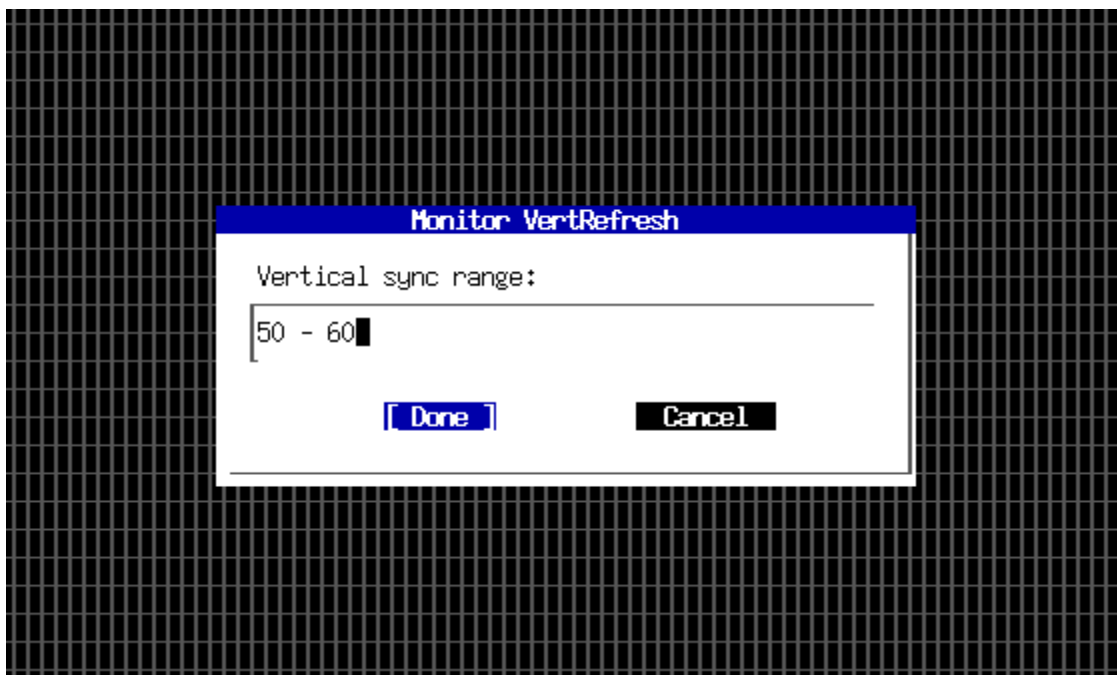


Figure 1.4b

4. Configuring Screen

- a. After configuring your monitor, use ARROW KEYS to select 'Configure screen' and press Enter. (**Figure 1.5**)
- b. At the first screen, select the model of your monitor amongst the list or select the highlighted choice in the figure. (**Figure 1.6**)
- c. In the second screen, select the type of display you are using or select 'Detect' if your display type is not listed. (**Figure 1.7**)
- d. In the third screen, select the type of rotation you wish to use or select 'Normal' if you do not require a rotation. (**Figure 1.8**)
- e. In the fourth screen, select the screen depth that is compatible with your monitor. (**Figure 1.9**)
- f. In the fifth screen, use your ARROW KEYS to move up and down the list and use the SPACEBAR to select the resolution(s) for your display. Keep in mind that if you enter or select a resolution that is incompatible with your display, your display will not receive a proper signal and will not display anything. (**Figure 1.10**)

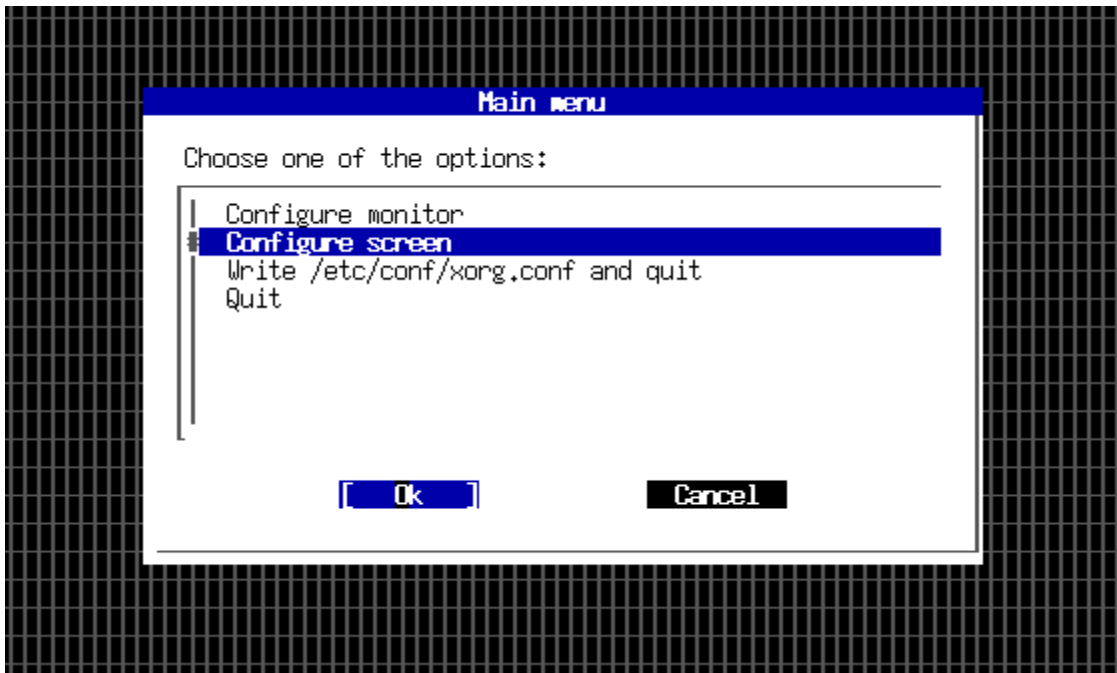


Figure 1.5



Figure 1.6

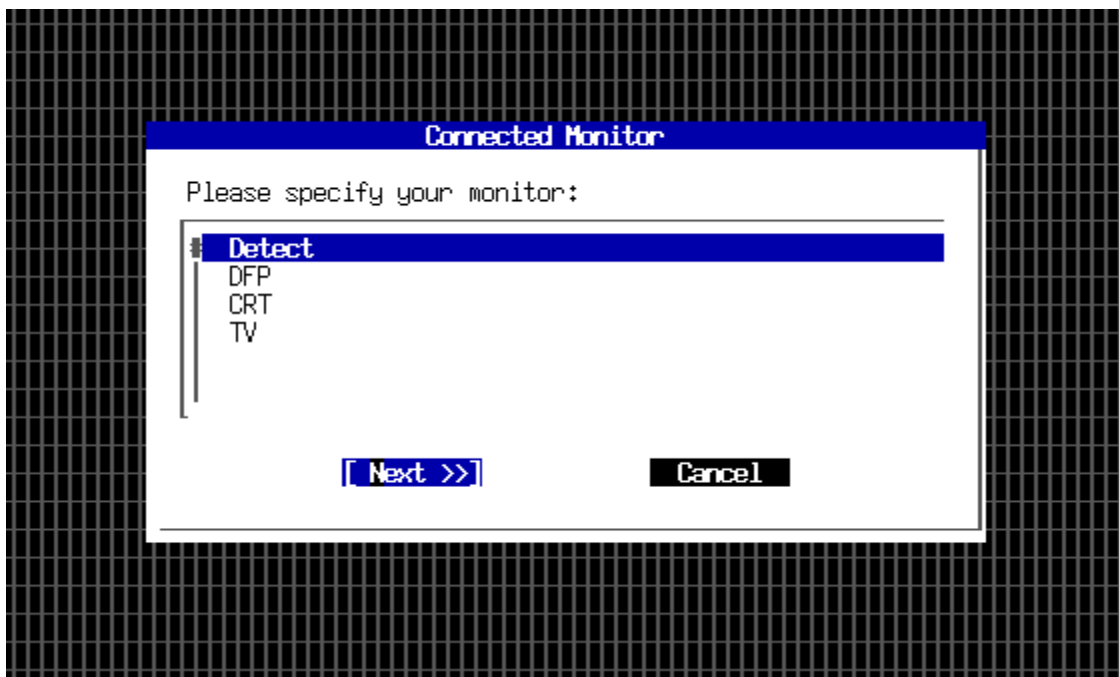


Figure 1.7

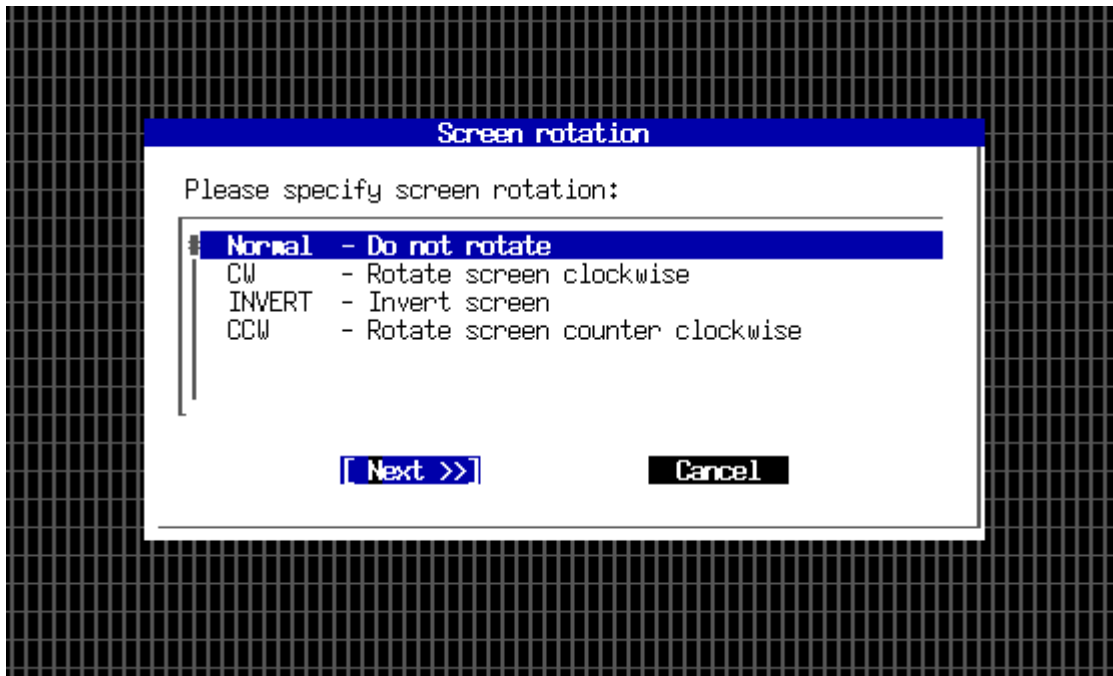


Figure 1.8

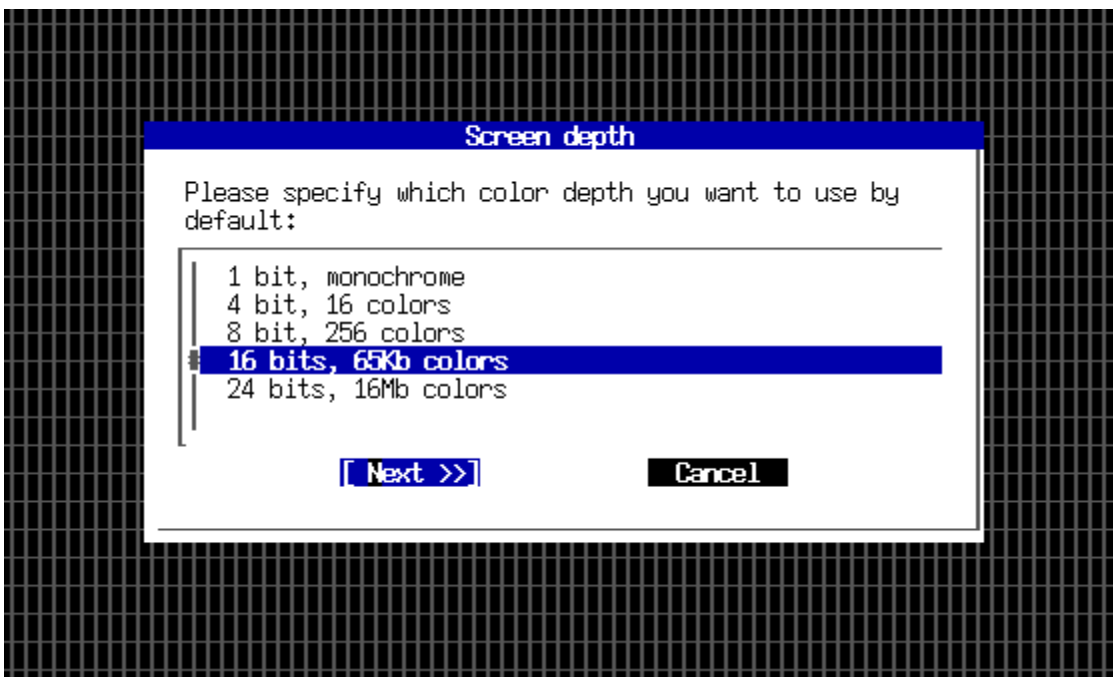


Figure 1.9

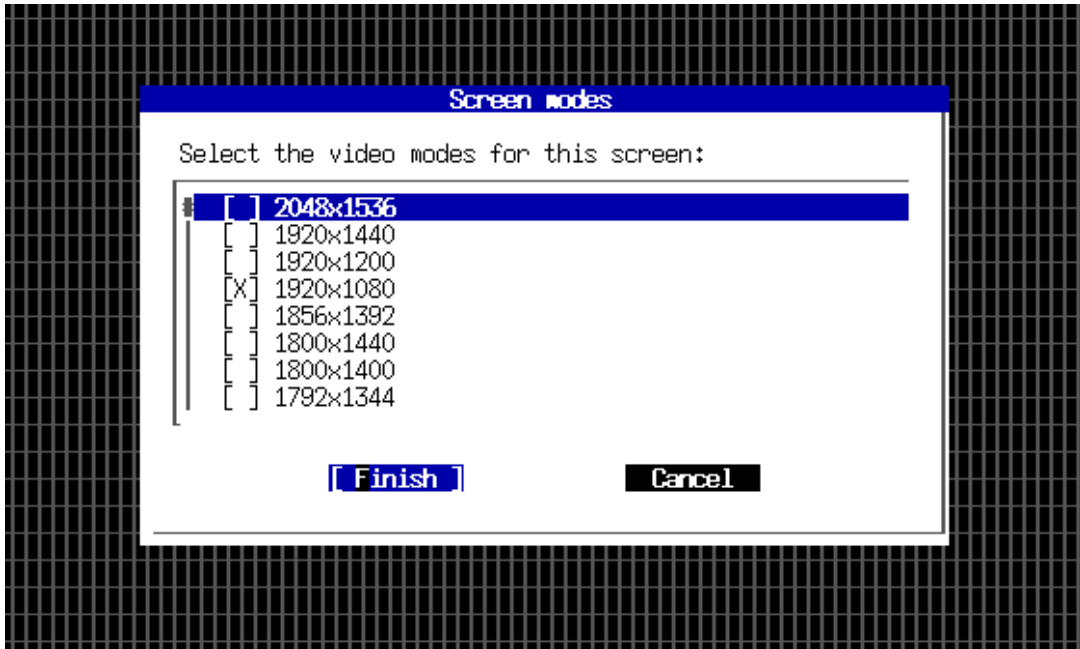


Figure 1.10

5. Save Settings

- After configuring your screen, use ARROW KEYS to select '**Write /etc/conf/xorg.conf and quit**'. (Figure 1.11)
- You will be prompted to test your configuration. Type 'Y' to have a test page generated. (Figure 1.12)

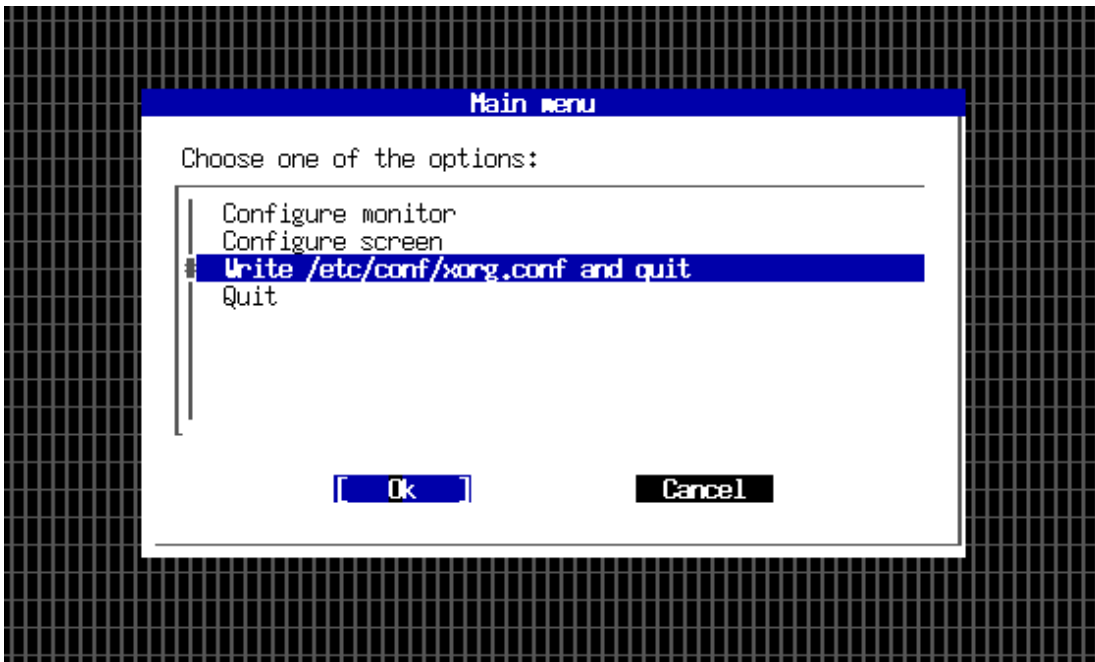


Figure 1.11

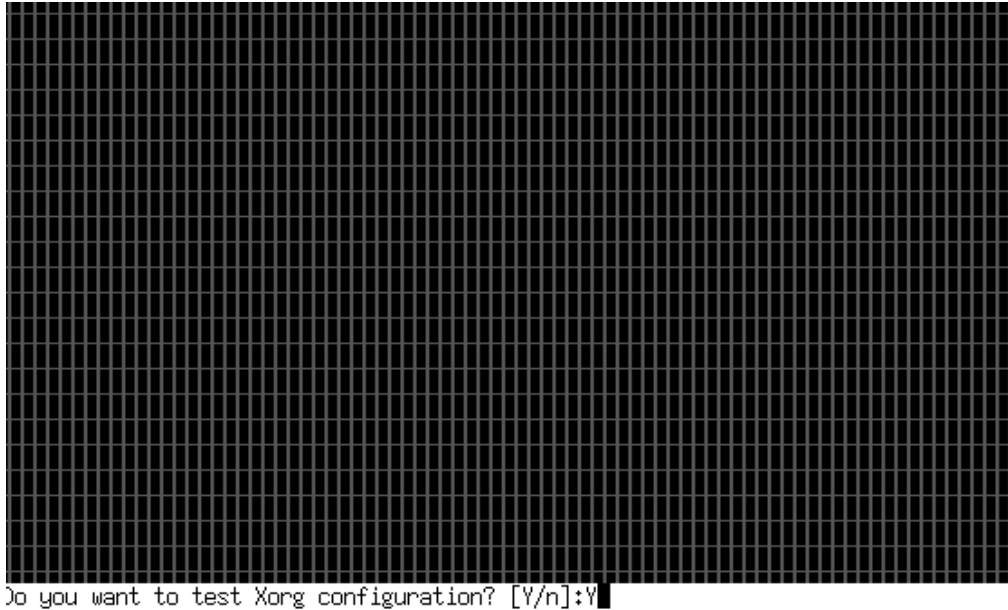


Figure 1.12

If your test was successful, a **white** window with a list of resolution will display at the top-left corner of your screen. From there, use your mouse to click the window and type **'exit'**. Once you're back at the **'bash-3.2#'** command line, type: **'reboot'** to reboot your client.

To view your resolutions, type Ctrl+Alt+2 to open SignagePro Configuration Panel and go to 'Resolution' under the 'System' tab. (**Figure 1.13**)

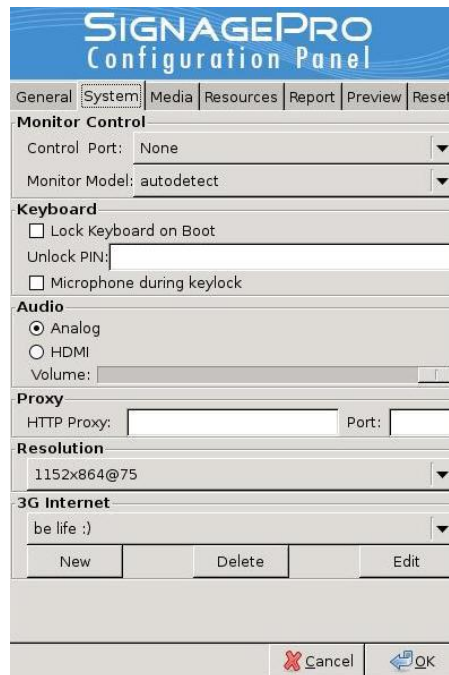


Figure 1.13