



Instructional Guide

Font Installation

In this tutorial, you will be walked through the steps to install fonts to your SignagePro client. The SignagePro client is only compatible with TrueType fonts (.ttf). If you wish to use OpenType (.otf) fonts, there are free services online that will allow you to convert OpenType fonts to TrueType

1. Setting up a USB drive for Font Installation
 - a. Take your USB drive and place the font(s) into your drive. (**Figure 1.1**)

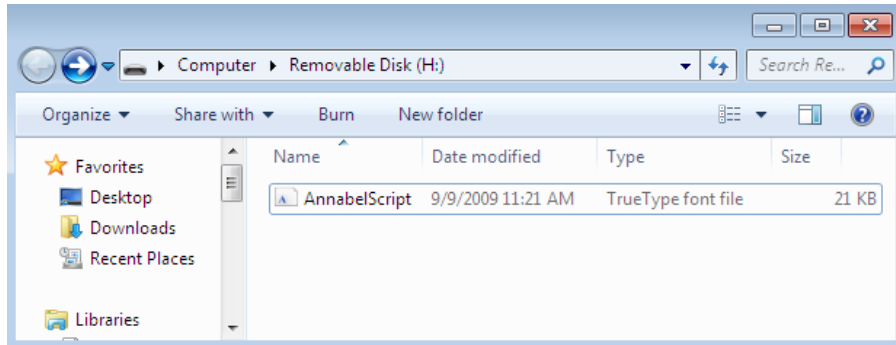


Figure 1.1

2. Installing your Font(s) in your SignagePro client
 - a. Insert your USB key to a vacant USB port behind the SignagePro client.
 - b. Press 'Ctrl+Alt+2' to open the SignagePro Configuration Panel.
 - c. Go to 'Resources' tab and select 'Install from USB' (**Figure 1.2**)

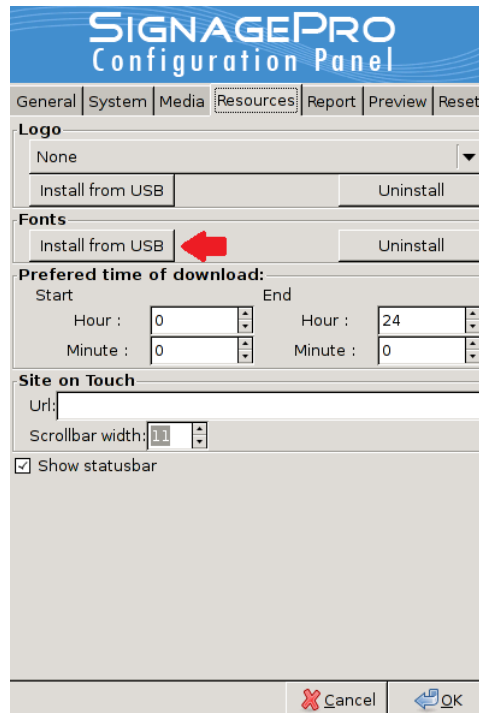


Figure 1.2

3. Test to see if font is installed successfully
 - a. On your Server PC, open your SignagePro Task Manager.
 - b. At the top of the screen, go to 'Creeping Line' -> 'Start'. (**Figure 1.3**)
 - c. Assuming that you have already installed the font on your PC, go to 'Choose Font' to select your font. (**Figure 1.4**)
 - d. Type a string of text then click 'Ok'. (**Figure 1.5**)

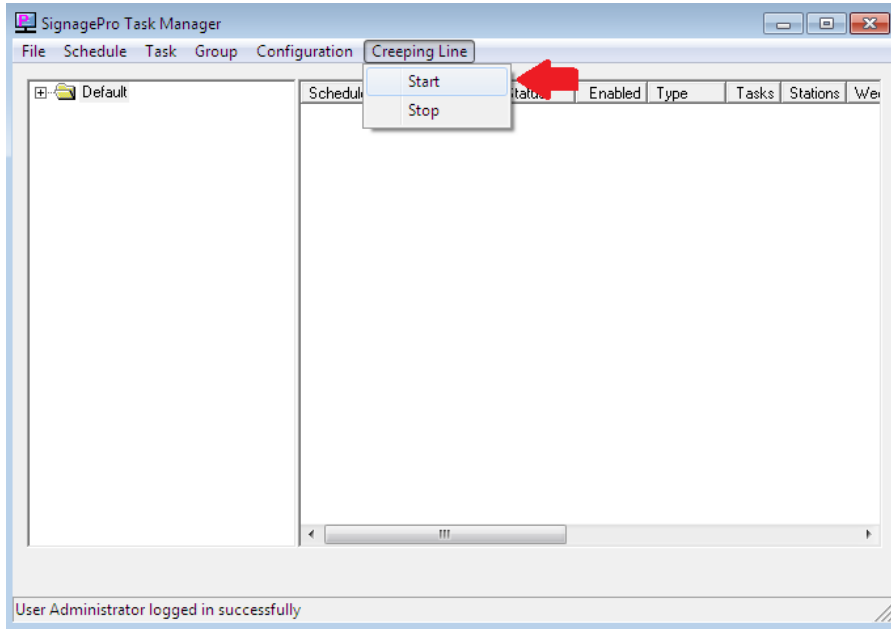


Figure 1.3

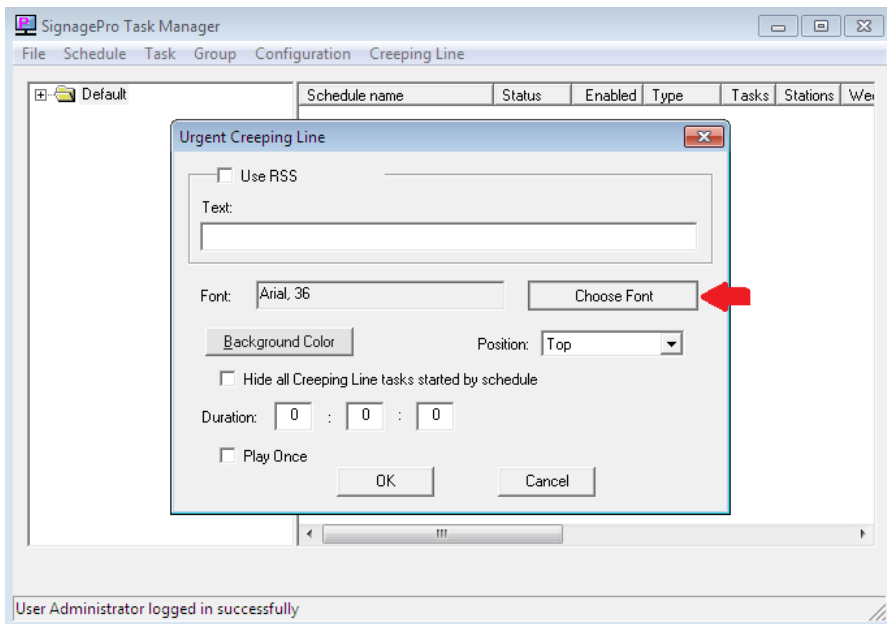


Figure 1.4a

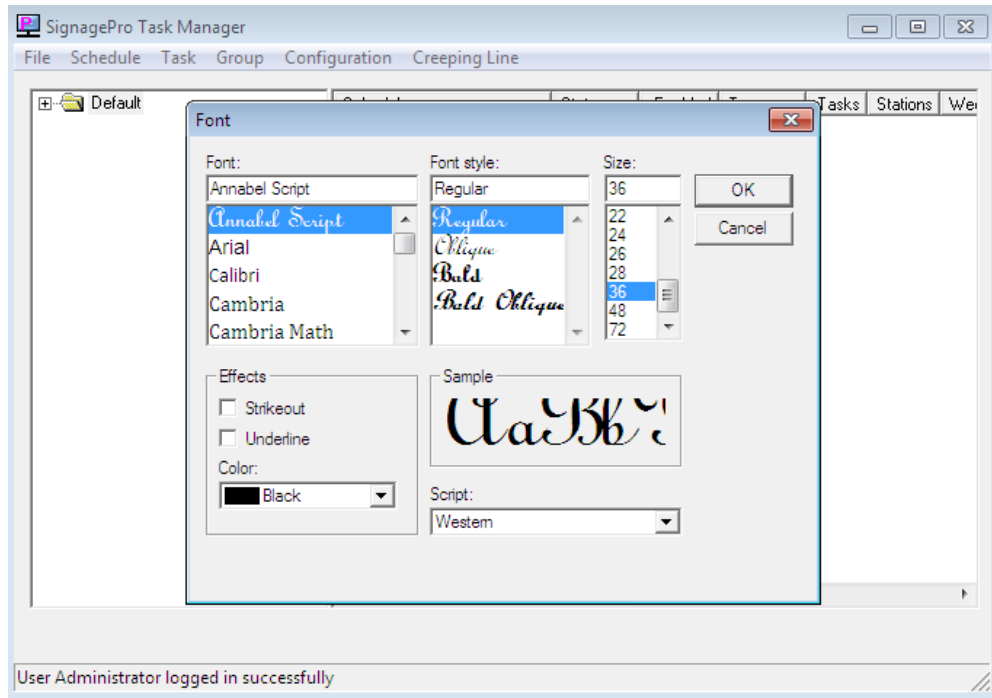


Figure 1.4b

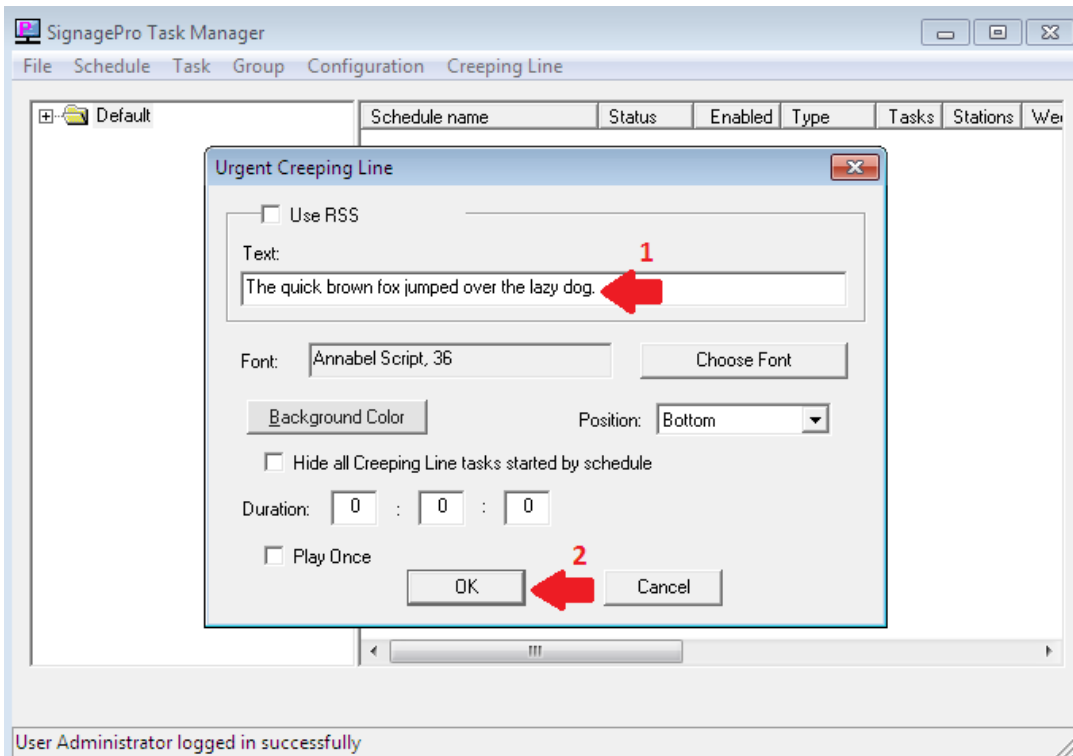


Figure 1.5

4. Verify that your installed font(s) are displayed
 - a. After running the Creeping Line, your SignagePro Client should display your text in the selected, new font. (**Figure 1.6**)

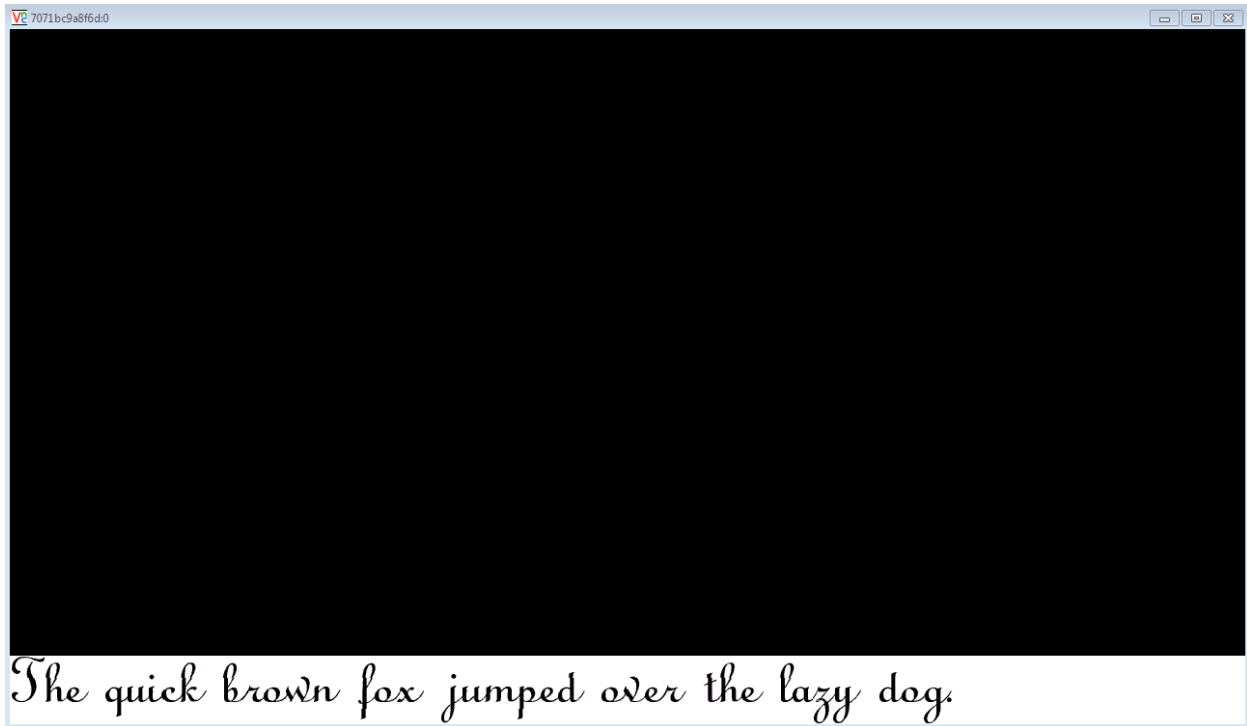


Figure 1.6